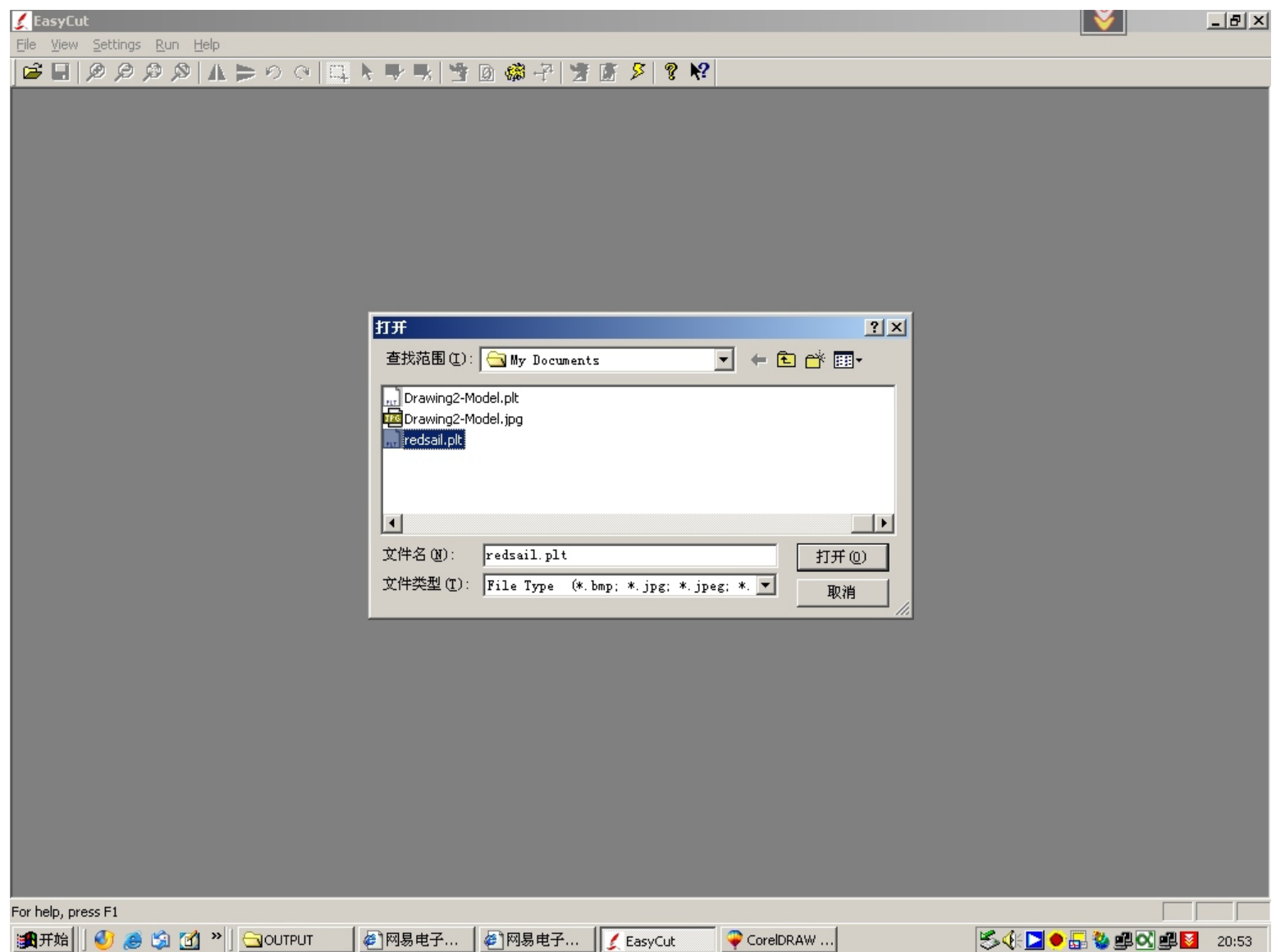
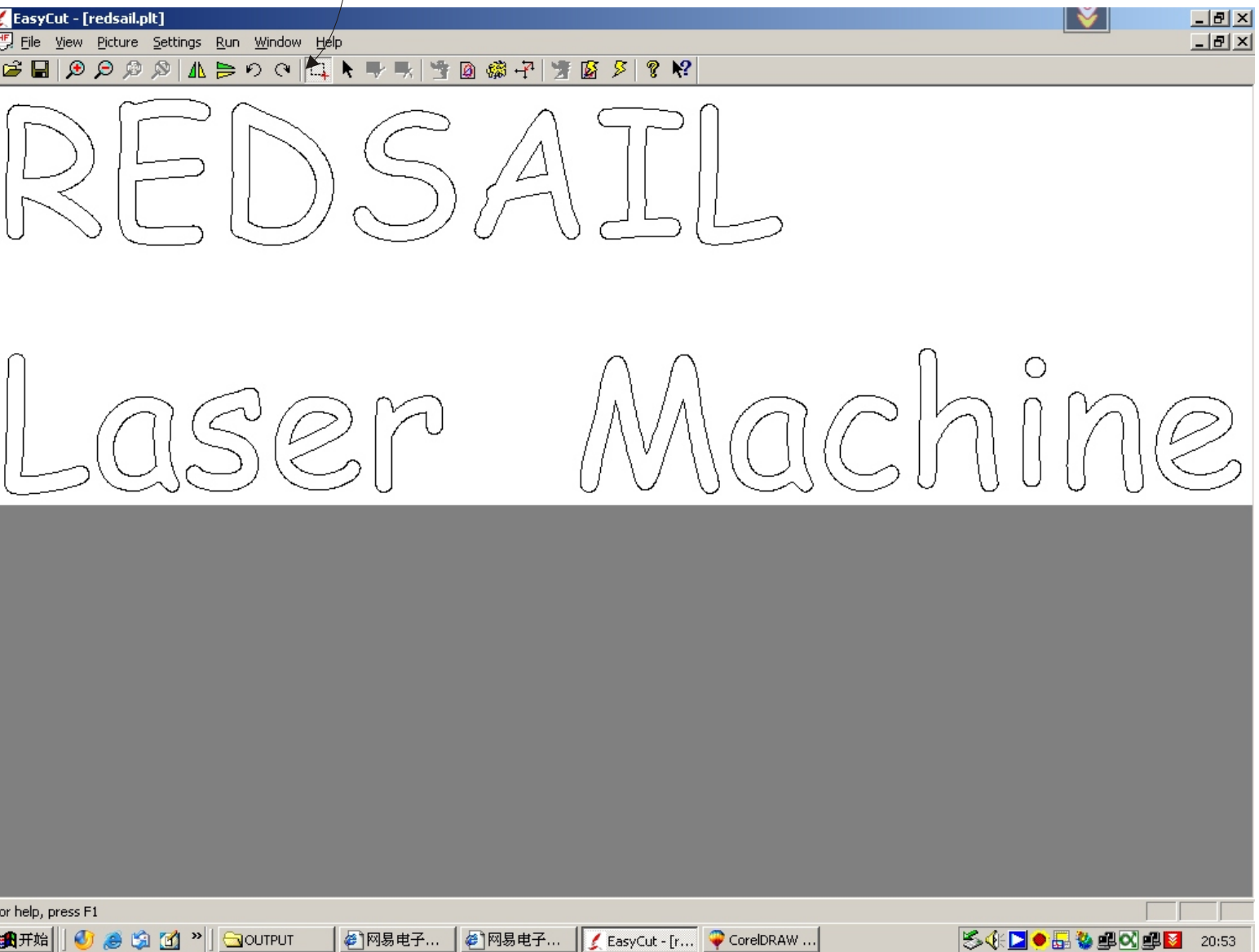


# 1)Open a Hpgl File (\*.plt)

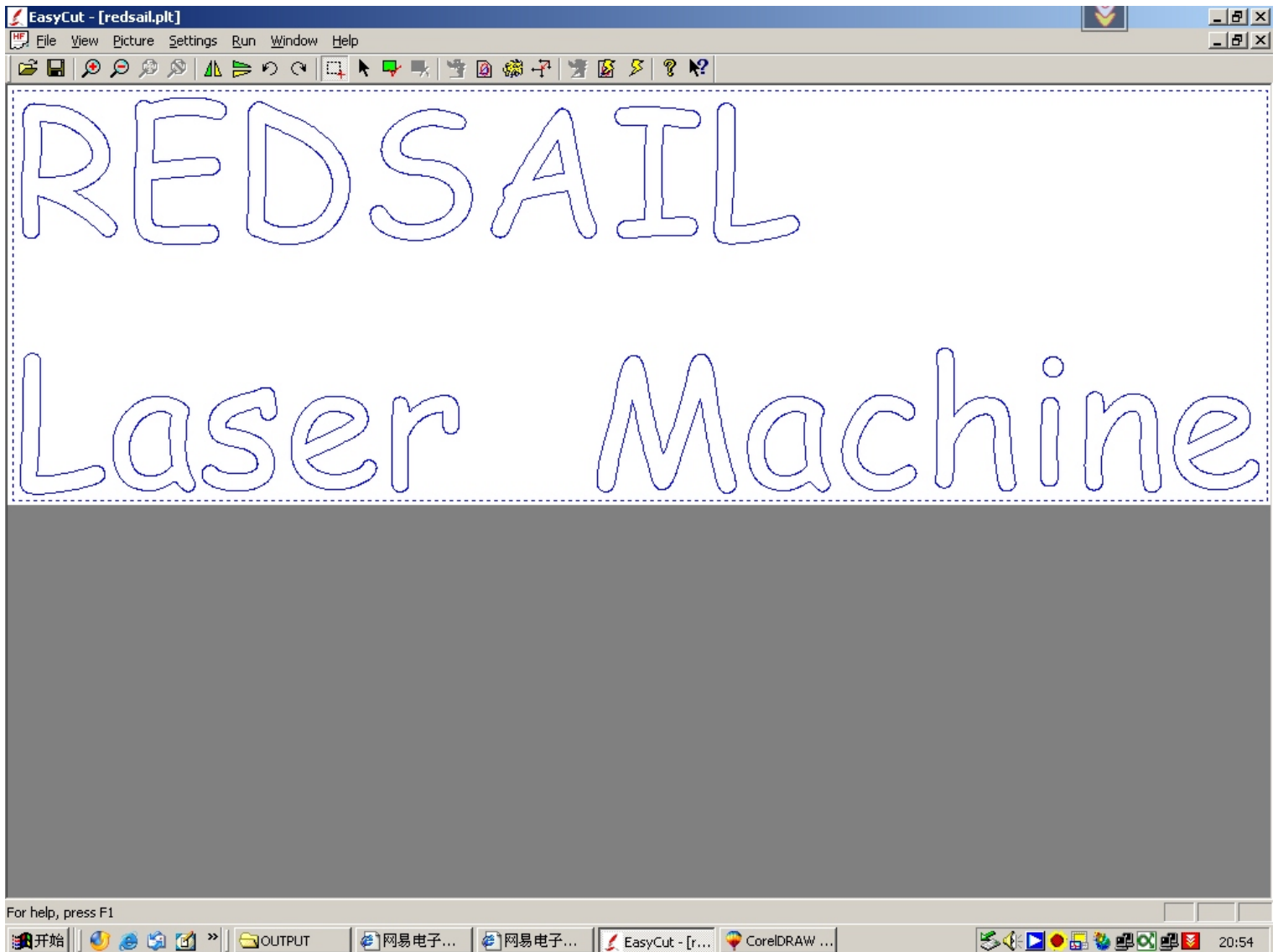


## 2) File is Loaded

Select tool

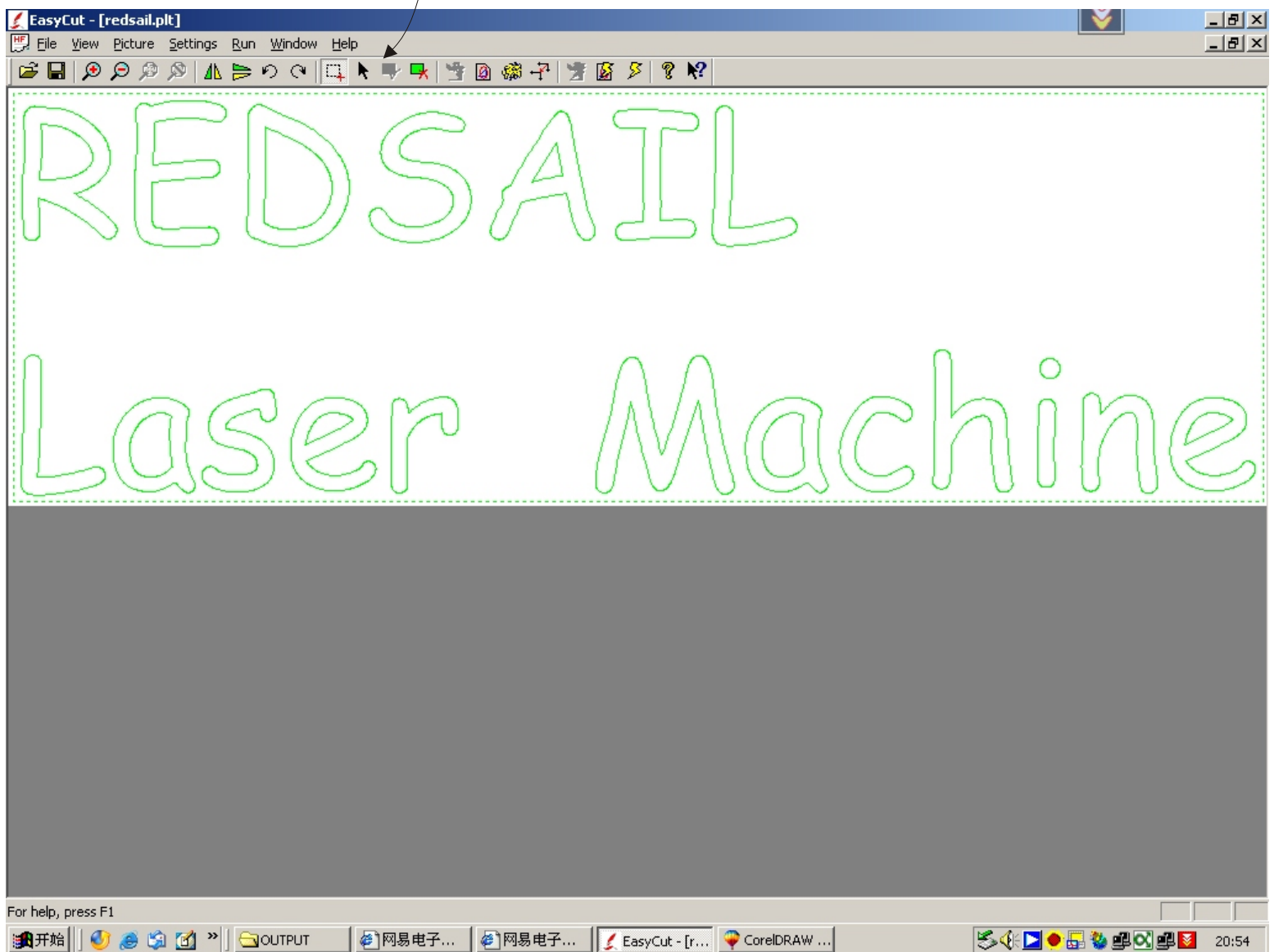


3) Press the Right key of Mouse, move the Mouse and select the Area

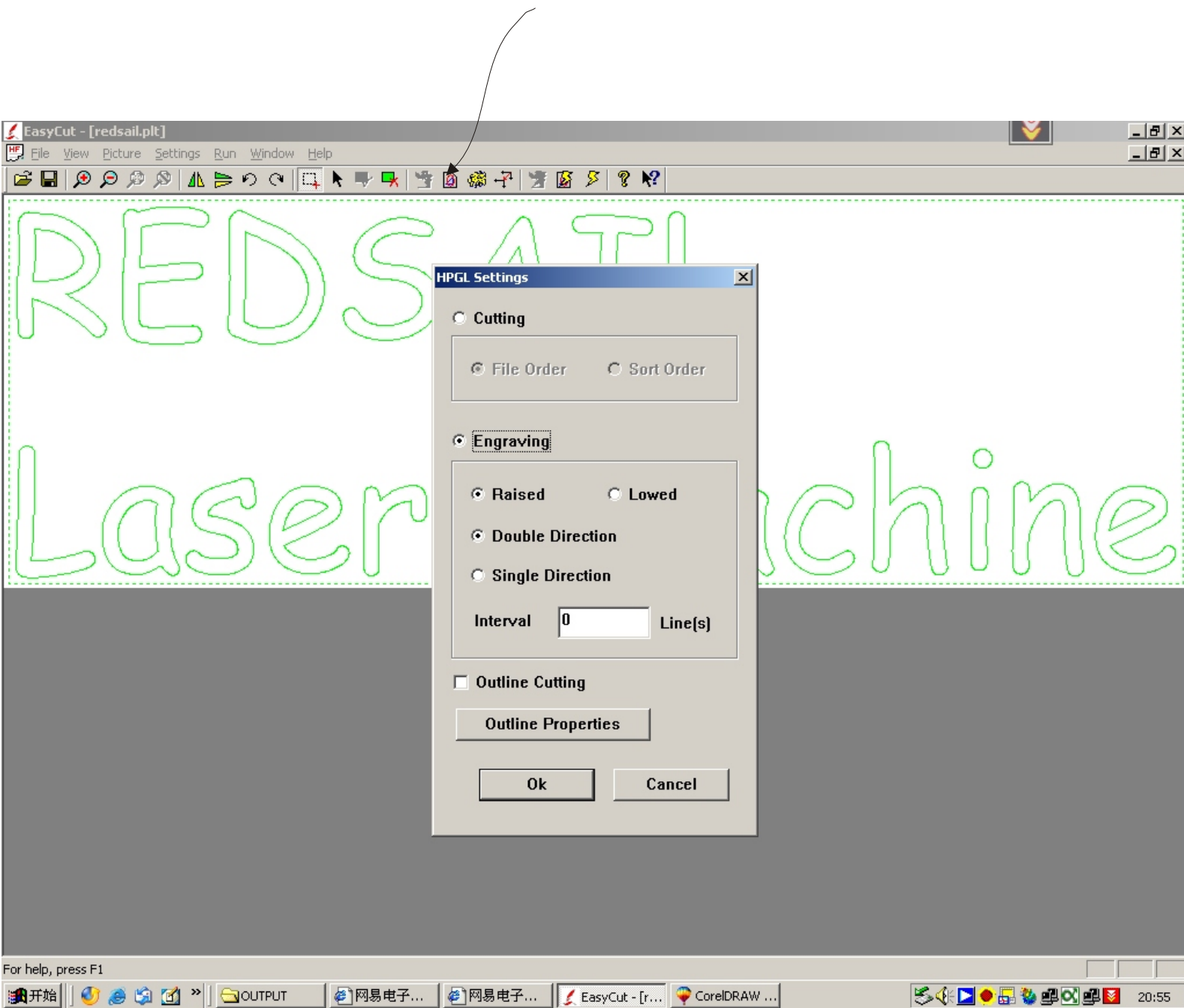


4)Click the Select OK

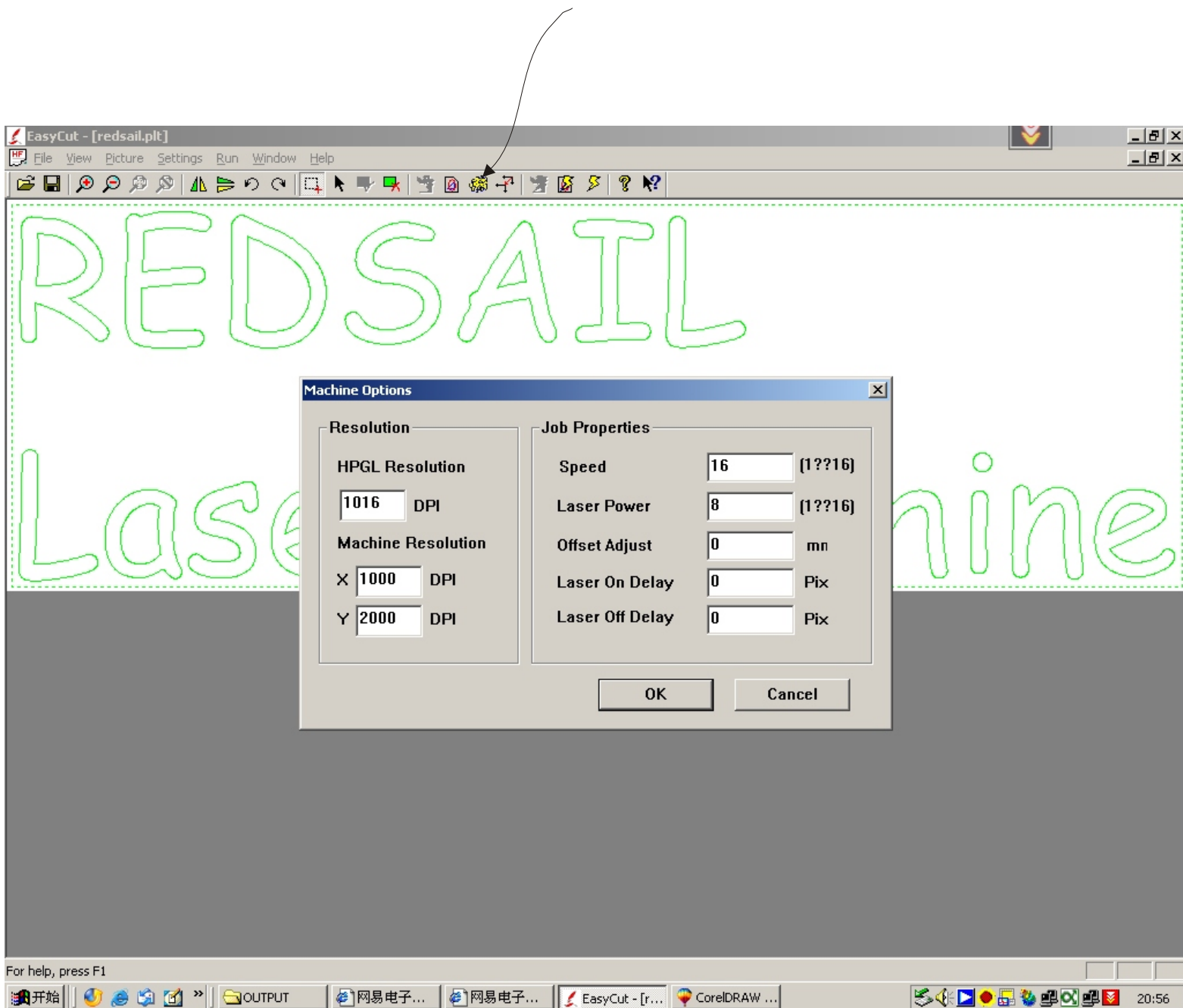
Select OK



5) Click the HPGL setting icon, select **Engraving**  
Click the **OK**

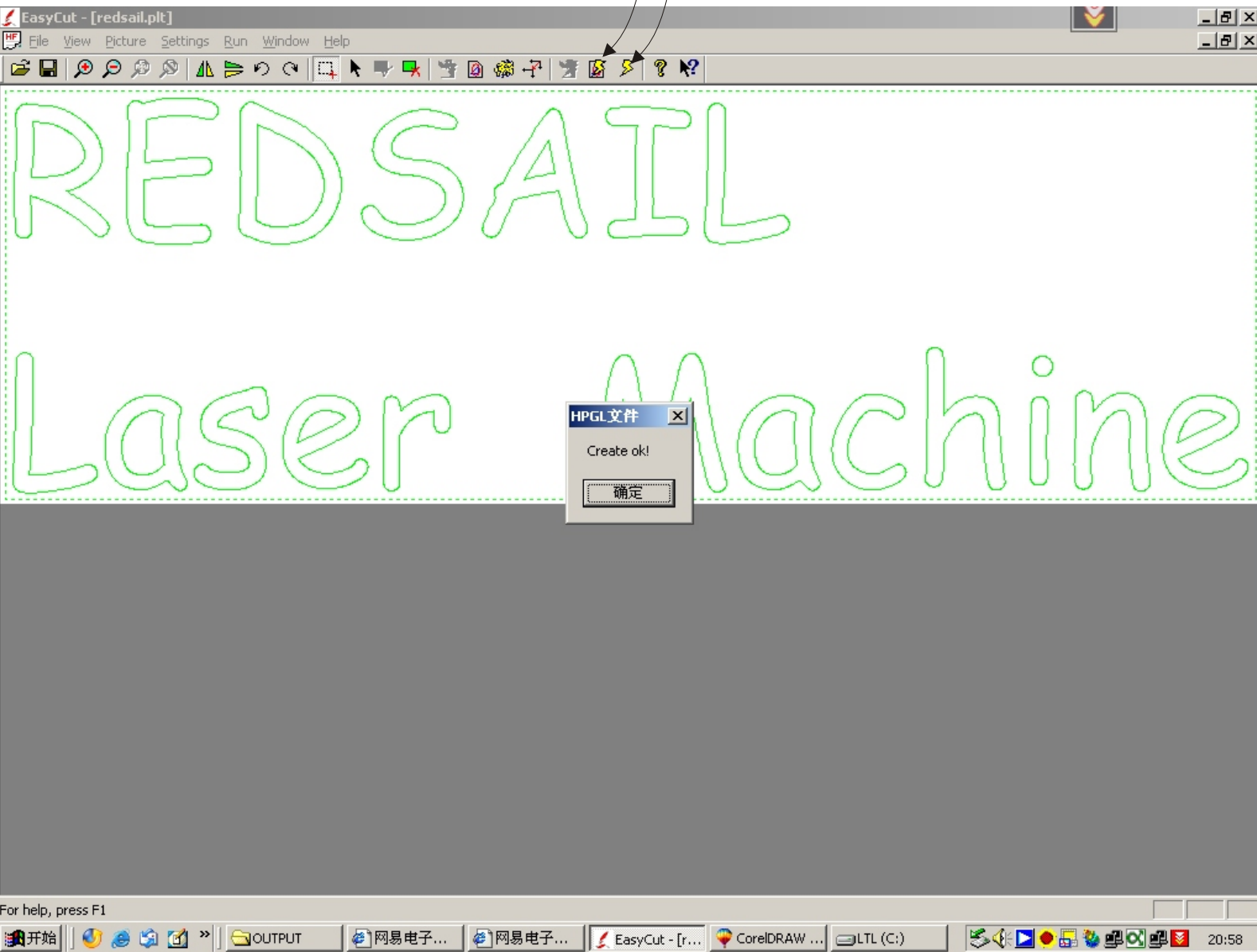


## 6) Click the **Machine Option** Set the Speed :16



7) Click this icon, wait a moment, the Job data is created; then click the Output

Create Output



8) Select the Com Port, Set the Baud rate  
As 115200. Then Click the **Send**

