

RAYFINE MOPA LP FIBER LASER MARKING MACHINE QUOTATION

From	LiaoCheng Rayfine Technology Co.,Ltd.		
Sales manager	Miss Jiang		
Email	jianghui@rayfinetech.com		
Date:	2020-7-21	Expire date	2020-7-30

Laser photos:



QUOTATION	
QUANTITY OF LASER MACHINE	1PCS
PRICE	20W USD 2350 / 30W USD 2600/ 50W USD 3950
DELIVERY TERM	EX-WORKS
PAYMENT TERM	TT/WEST UNION/ALIBABA TRADE ASSRUANCE ORDER
DELIVERY TIME	WITHIN 10 DAYS AFTER RECEIVE THE FULLY PAYMENT
PACKAGE	PLYWOOD PACKAGE
ORIGIN	SHANDONG, CHINA
WARRANTY TIME	3 YEARS WARRANTY

<http://www.rayfinetech.com>
 Email: jianghui@rayfinetech.com
 Tel/Whatsapp: 008615954943696

Feature:

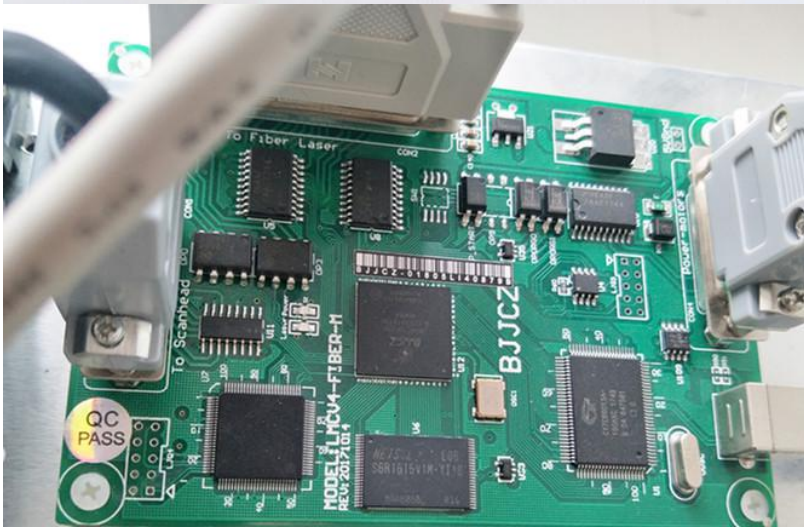
1. Double red dots more easy to get focus.
2. Maintenance-free and 100 000 hours long life time.
3. Quality Taiwan Mean Well power supply and AC conductor and switch
4. It adopts the best China MOPA series laser source
5. Best quality digital galvo scan head, Have double red light and alarm lamp function.
6. Genuine EZCAD control program compatible with win7/win8/win10 system with USB cable;
7. Working speed is 8m/s
8. Motorized Z axis more convenient to get focus.

TECHNICAL PARAMETERS			
Model	RF-F-20W	RF-F-30W	RF-F-50W
Laser source	JPT LP		
How to get focus	Double red dots		
Wavelength	1064nm		
Max Single pulse energy	0.8 mj		1.25mj
Pulse duration	200ns		
Laser beam quality M2	< 1.5		< 1.8
Frequency	1~600khz		
Marking Area	110x110mm		
Spot size	27.5 μ m		
Working speed	8 m/s		
Min. linear width	0.01mm		
Min. Character size	0.2mm		
Repetition Accuracy	8 μ rad		
Control program	Genuine EZ-CAD control system Compatible with win7/8/10		
Graphic format supported	Jpg,Bmp,dxf,plt		
Supply voltage:	AC110V 60HZ / 220V 50HZ		
Cooling type	Air cooling		

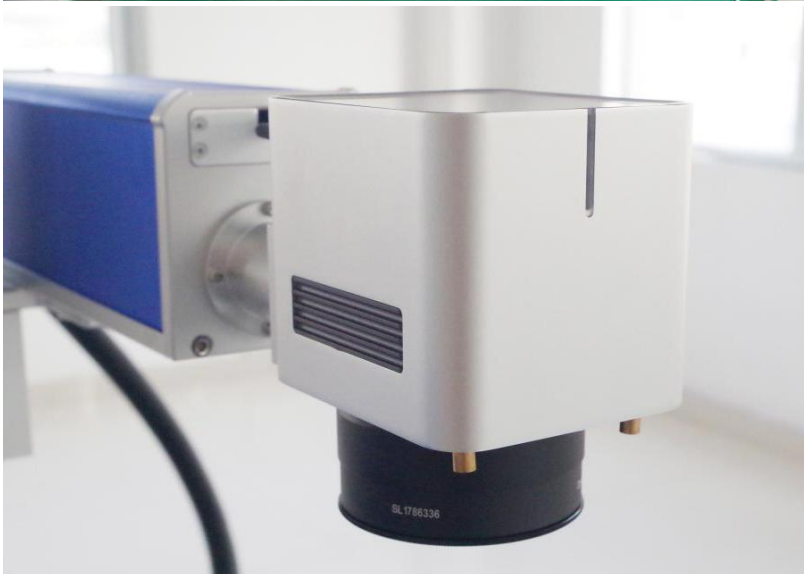
Quality spare parts of the fiber laser marking machine



China best brand laser source. the transportation rate of electricity and optic is high, the function is stable and can work for a longer time continuously, lifetime up to 100,000 hours.



Genuine EZCAD control program compatible with win7/win8/win10, easy control software



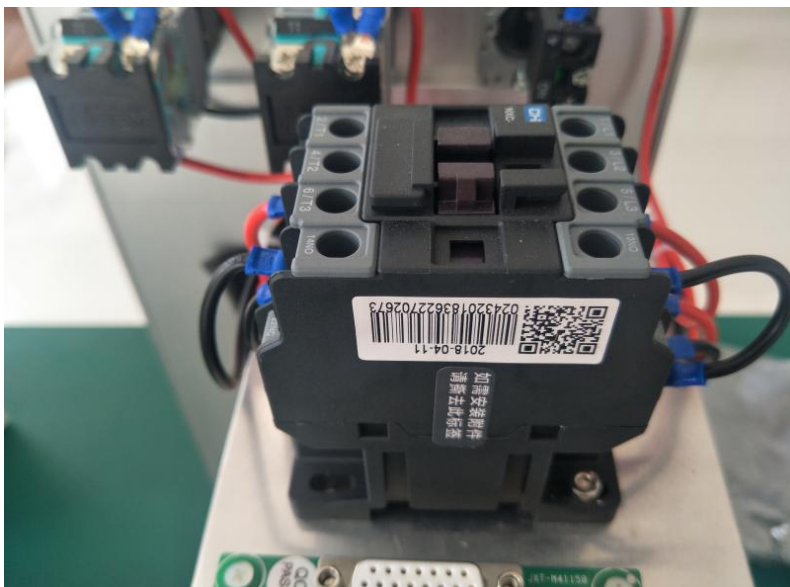
Best quality digital galvo scan head, Have double red light and alarm lamp function



100x100mm lens



Quality Taiwan mean well power supply



High quality AC conductor

PACKING LIST

ITEM	QUANTITY
laser marking machine	1set
Foot switch	1pcs
US power cable	1pcs
USB cable	1pcs
USB flash drive for program quick set up	1pcs
CD with EZCAD control program	1pcs
English User manual	1pcs
Focus ruler	1pcs
hexagon bar wrench	1set



Optional parts

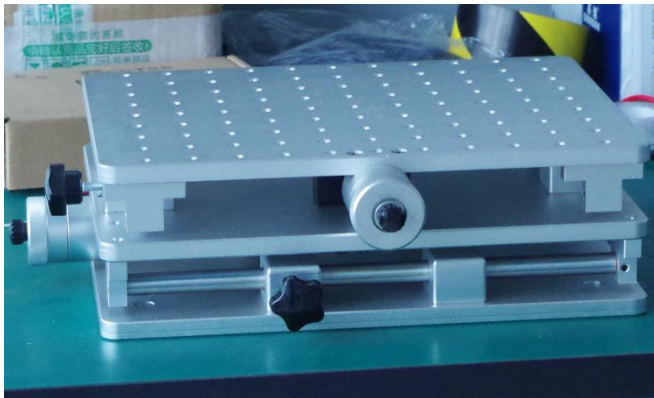
Standard 80mm rotary axis : USD 200



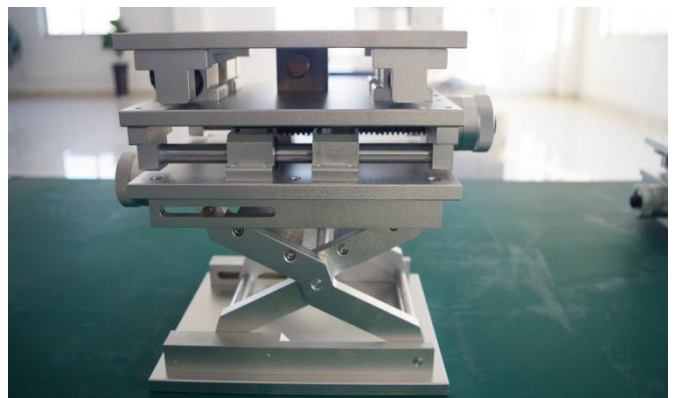
Rotary axis for Jewelry: USD 200



2D working table : USD130



3D working table :USD 200



Spare lens : Different sizes have different prices

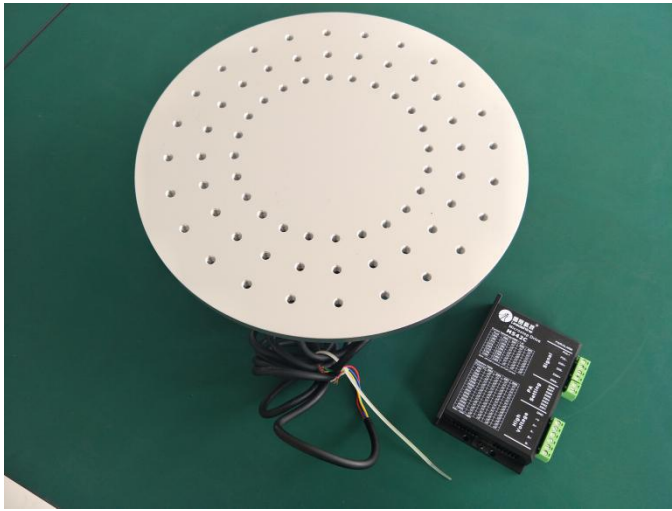


Conveyor belt :USD1300

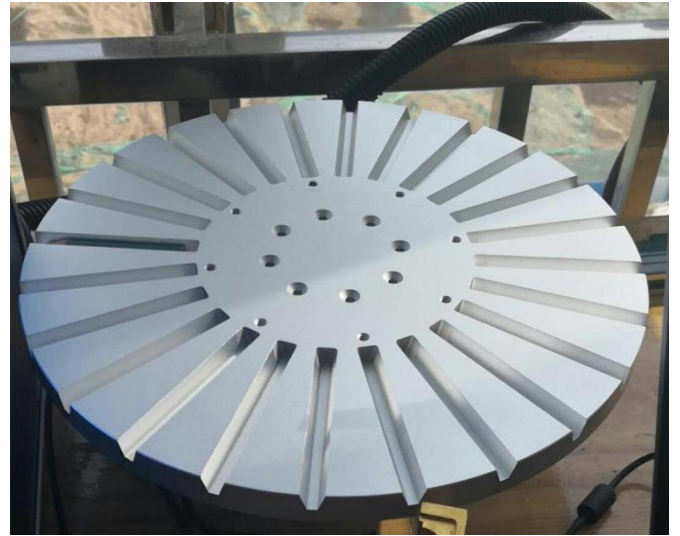


Rotating platform: USD 300

Rotating platform for pen : USD 400



cyclops system: USD1600



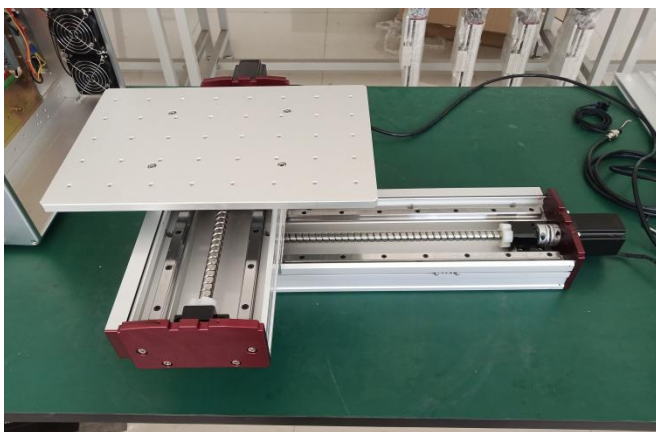
protective glasses: USD 50



XY working table : USD 1500



3D dynamic focus function: USD6500





Liaocheng Ray Fine Technology Co.,Ltd

Dongchang dong road, Liaocheng development zone, Shandong, China

Sample show:



Packing:

We have 3 layers packages .For the outside, we adopt wood craft case . In the middle ,the machine is covered by foam, to protect the machine from shaking. For the inside layer , the machine is covered by thickening plastic bags for waterproof.

http://www.rayfinetech.com
Email:jianghui@rayfinetech.com
Tel/Whatsapp:008615954943696



Pre-sale service

We arrange final test before shipment. We run the machine without materials for a few days, and then mark materials for test. After making sure the machine is the best performance, then ship out the machine.

After-sale service:

1. The whole machine warranty is 3 years.
2. Electrical parts: Switching power supply, AC contactor, Switch button. If have quality problem in within 2 years, we sent to you a new one and free.
3. Motherboard and galvanometer have quality problems, We will send the new one to you , But the customer needs to return the old part to us.
4. If the laser source have quality problems, we can repair it .

Note : The above warranty terms are limited to nonhuman quality problems.