



Beijing JCZ Technology Co., Ltd.

web: <http://en.bjjcz.com>

Tel:86-10-64426995

---

## Cyclops system user manual



Note: Please refer to software if any update happen

Add: M3 building ,NO. 1 east road of Jiuxianqiao ,Chaoyang District ,Beijing ,China



Beijing JCZ Technology Co., Ltd.

web: <http://en.bjjcz.com>

Tel:86-10-64426995

---

## Catalog

Summarize.....	3
1.Component: .....	3
2. Introduction: .....	4
2.1、 Cyclops scanhead.....	4
2.2、 Back ground show software Ezcad.....	5
3.Installation: .....	5
4. Steps:.....	6
5. Function introduction.....	6
5.1 Marking-Ezcad.....	6
5.2 Calibrate—how to use CameraCali.exe.....	7



Beijing JCZ Technology Co., Ltd.

web: <http://en.bjjcz.com>

Tel:86-10-64426995

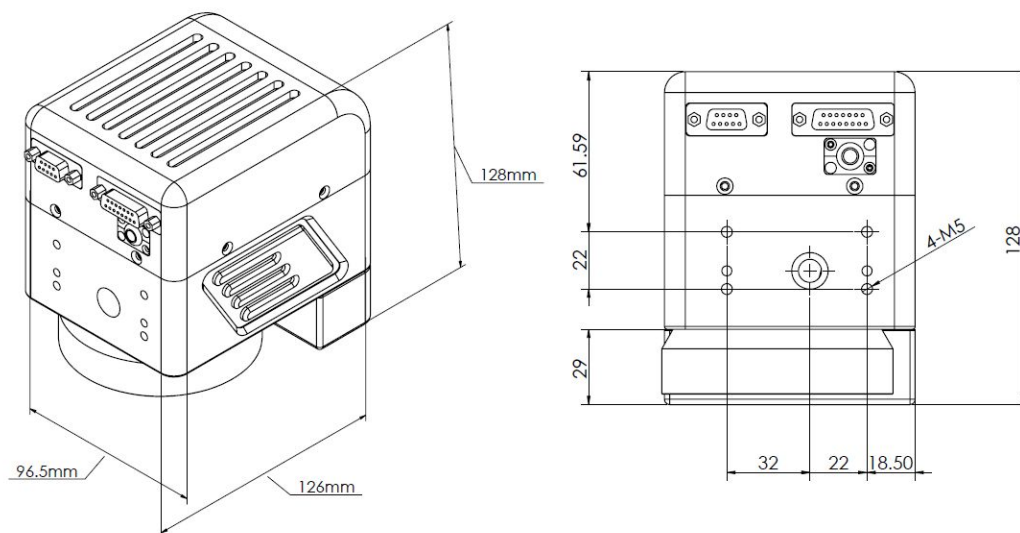
# SUMMARIZE

## 1.Component:

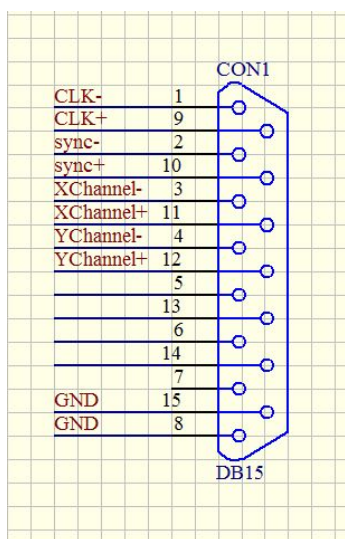
EZCAD with background show function, calibrate program (CameraCali) , .net environment, camera, USB cable, jig.

## 2. Introduction :

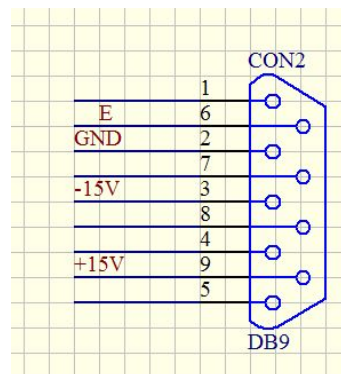
### 2.1 Cyclops scanhead



Drawing of Cyclops



Pins definition of CON1



Pins definition of CON2

## 2.2、 Back ground show software Ezcad

The software include ezcad and calibrate program.Camera collect image and send it to ezcad workspace,calibrate program match the camera and scanhead coordinate,so with this system,where you put the text on in workspace,where it will be marked on the real part(inside of the calibration area).user can view the part and also adjust the text marking position according to the position of the part,no need to use red point.

If you use this system in WIN7 OS,after get the key file from seller,put cursor on ezcad.exe then right keyboard choose '**Run as Administrator(A)**'. Only the first time to operate it like this, from the second time, just double click to run it.

This system support both B&W camera and colorful camera.

## 3.Installation :

1. Copy ezcad folder to PC;
2. Open background show function in the marking board
3. Contact JCZ ask for licence.
4. Double click BJJ CZ\_remoteupdate.exe will show follow:



Beijing JCZ Technology Co., Ltd.

web: <http://en.bjjcz.com>

Tel:86-10-64426995



5. Click online finish and input the licence to the pop up window.

**Note: Computer need to link internet, also must fix computer and dongle!**

## 4. Steps:

1. First install .net environment
2. Same as normal EZCAD, firstly calibrate scanhead
3. Open CameraCali.exe and set parameters, finish calibrate and save the calibration file
4. Open ezcad and draw something and mark, it will be marked on the position you see through the view window.

Note: the marking position is ezcad show position is just limited in the calibration area.

**Follow will detail introduce the usage**

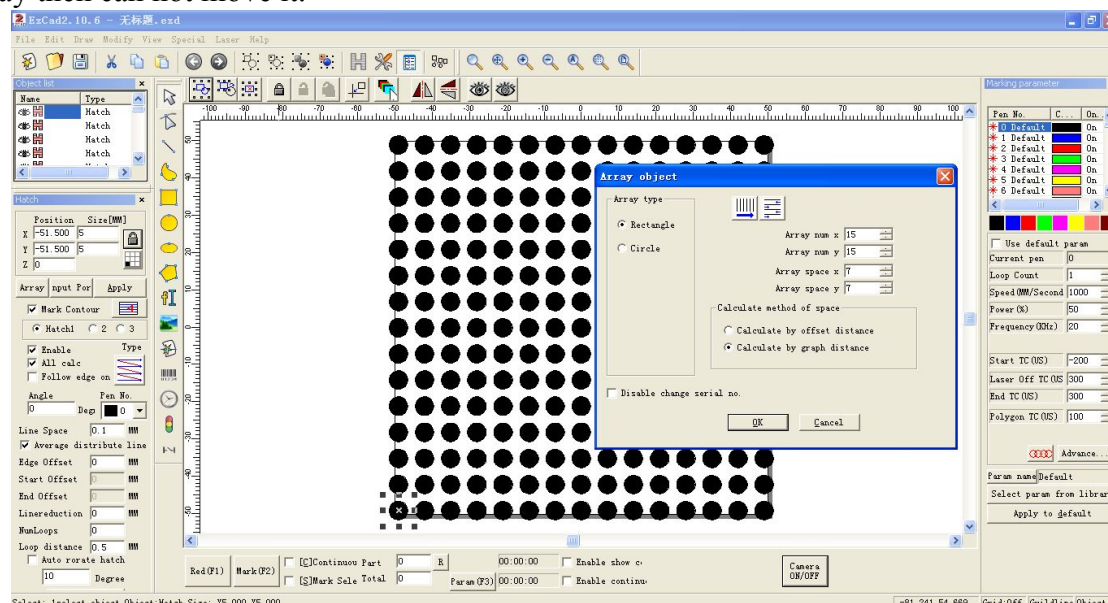


## 5. Function introduction

### 5.1 Marking-Ezcad

How to make the camera calibrate file:

1. Open EZCAD and click F3 to finish parameter setting and also load in the scanhead calibration file.
2. Then make point marking file in ezcad. And use the file in cameracali.exe program.the file is point array, number of the point must be odd,and please remember point distance.like follow the diameter of the point is 5mm, point distance is 7mm,number is 15X15,number of x and y direction must be odd, but can be different. Mark the point array then can not move it.



3. open folder of res,then in param.ini

```
CAMERA=1  
CAMERATYPE=MVC3000F  
//CAMERATYPE=MVC1000
```

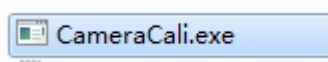
CAMERA=1: enable background show function

CAMERATYPE=MVC300F:enable camera

//CAMERATYPE=MVC1000:not use this camera

### 5.2 Calibrate—how to use CameraCali.exe

1. Run



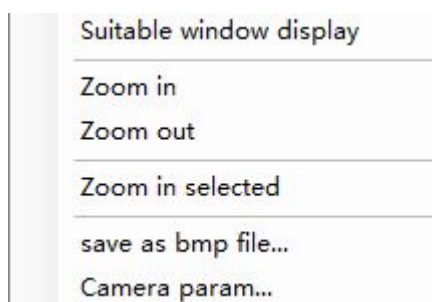
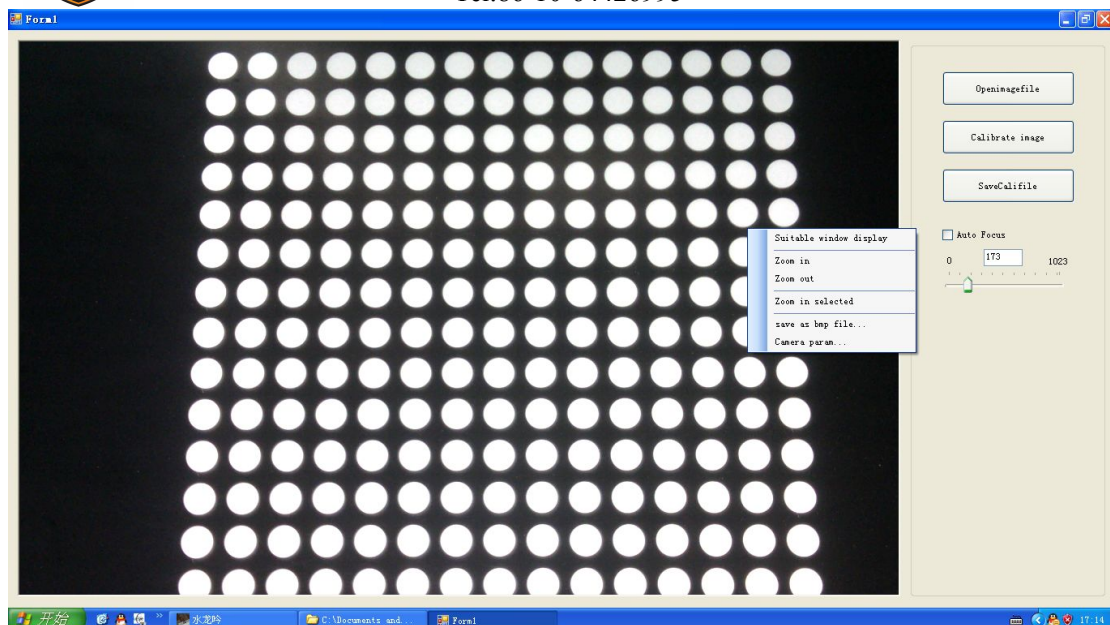
,and click right keyboard in view area,will show follow:



Beijing JCZ Technology Co., Ltd.

web: <http://en.bjjcz.com>

Tel:86-10-64426995



**Suitable window display:**camera view area same size as workspace

**Zoom in selected:**use mouse to choose the area you want to zoom in

**Save as bmp file:** save current show as bmp file(user don't need it usually)

**Camera param:**click it can set mirror,Luminance,contrast and exposure,please make sure the view image same as real object.

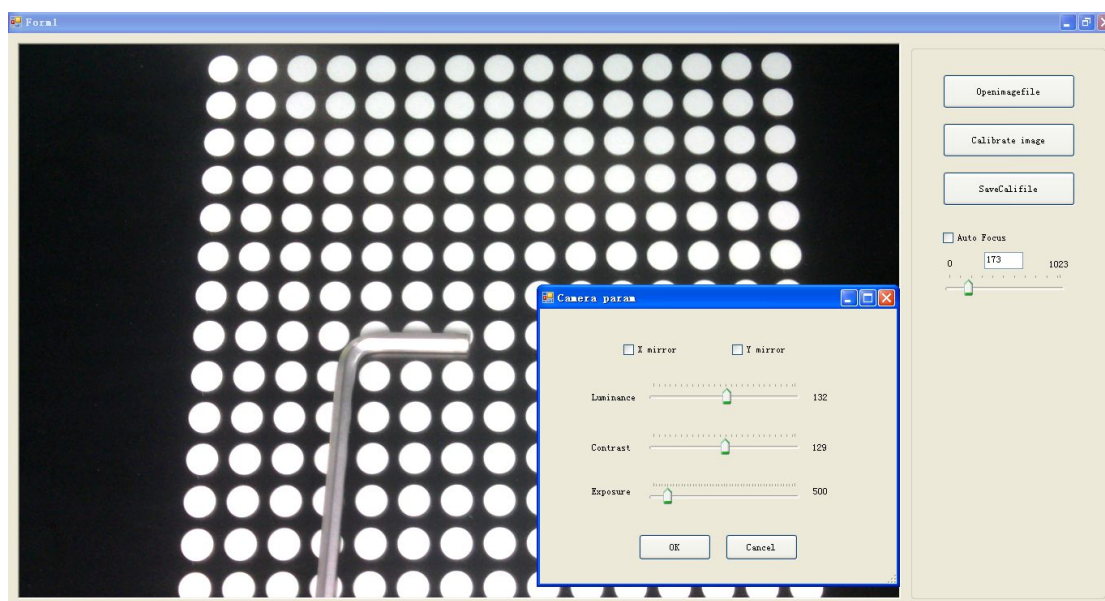
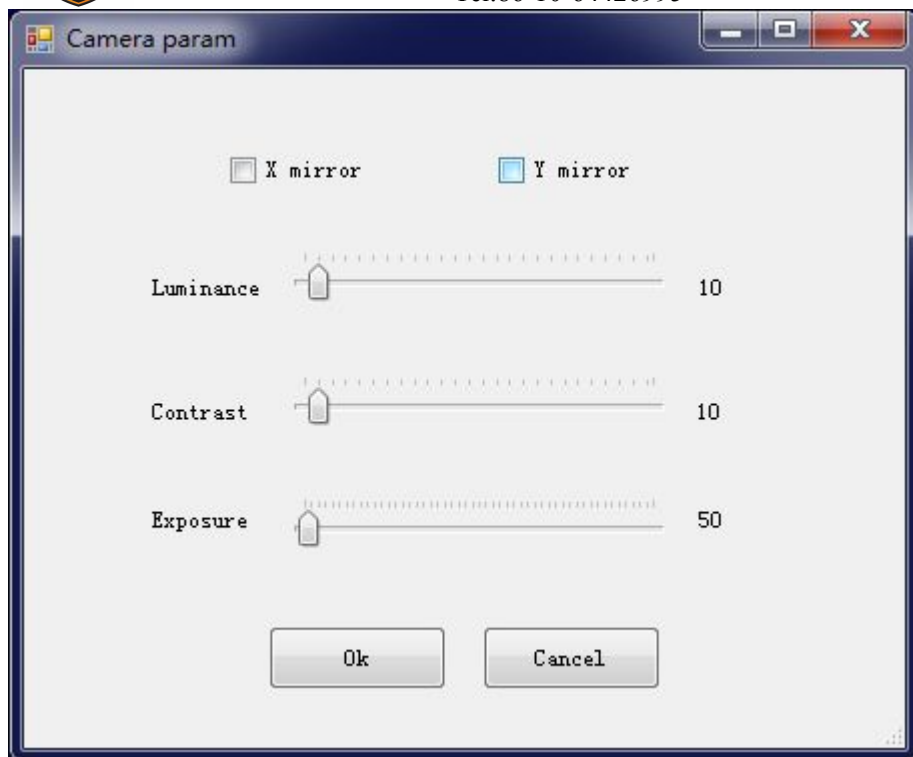




Beijing JCZ Technology Co., Ltd.

web: <http://en.bjjcz.com>

Tel:86-10-64426995



2. Adjust position of the camera, focus of the camera to make sure every point is clear to see, and no other light noise, as fig:

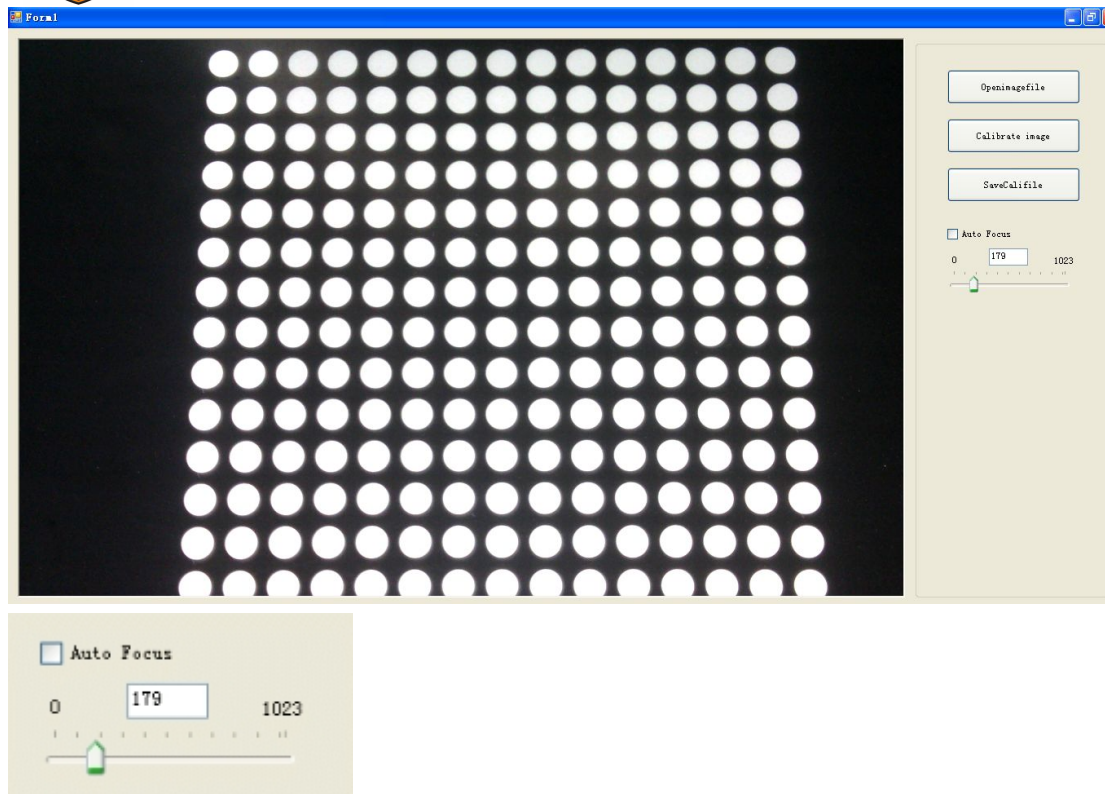




Beijing JCZ Technology Co., Ltd.

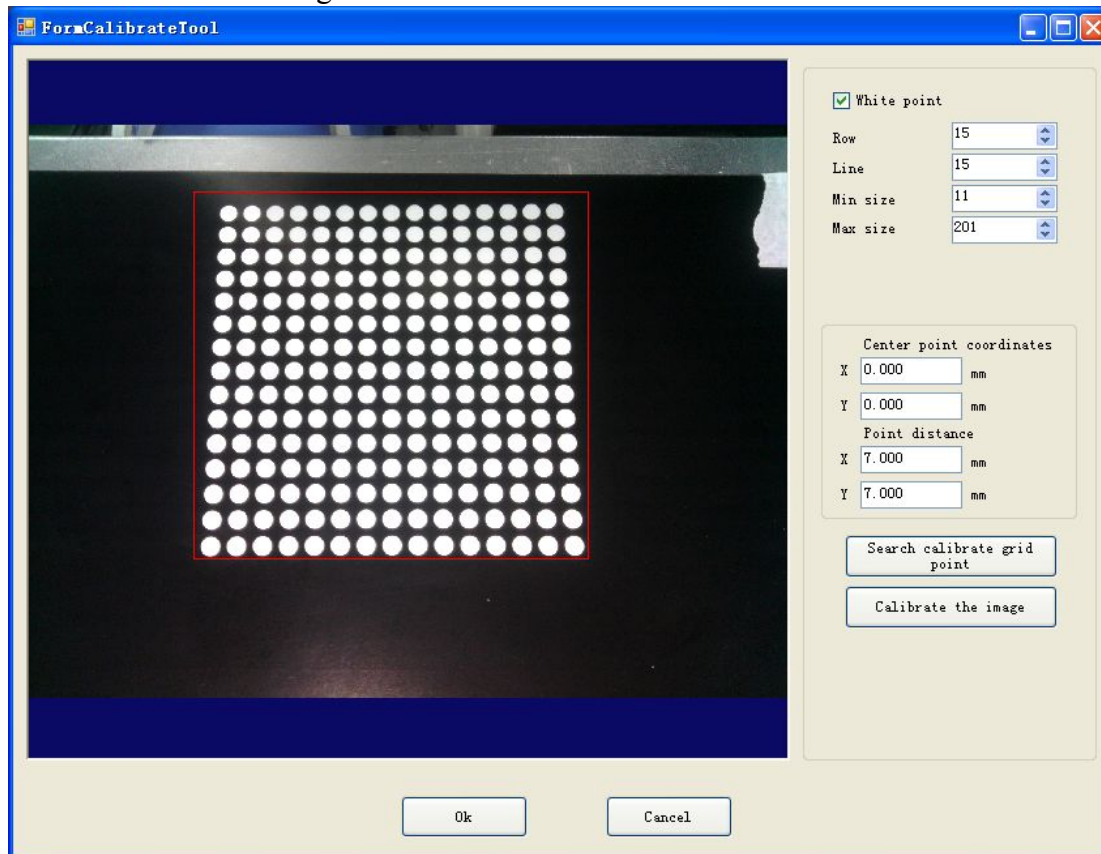
web: <http://en.bjjcz.com>

Tel:86-10-64426995



Click 'Auto Focus', system will automatic focus, if not, will be handle focus,we suggest not use auto focus,with handle focus, the value is 0-1023

3. Click 'Calibrate the image'



Add: M3 building ,NO. 1 east road of Jiuxianqiao ,Chaoyang District ,Beijing ,China



Beijing JCZ Technology Co., Ltd.

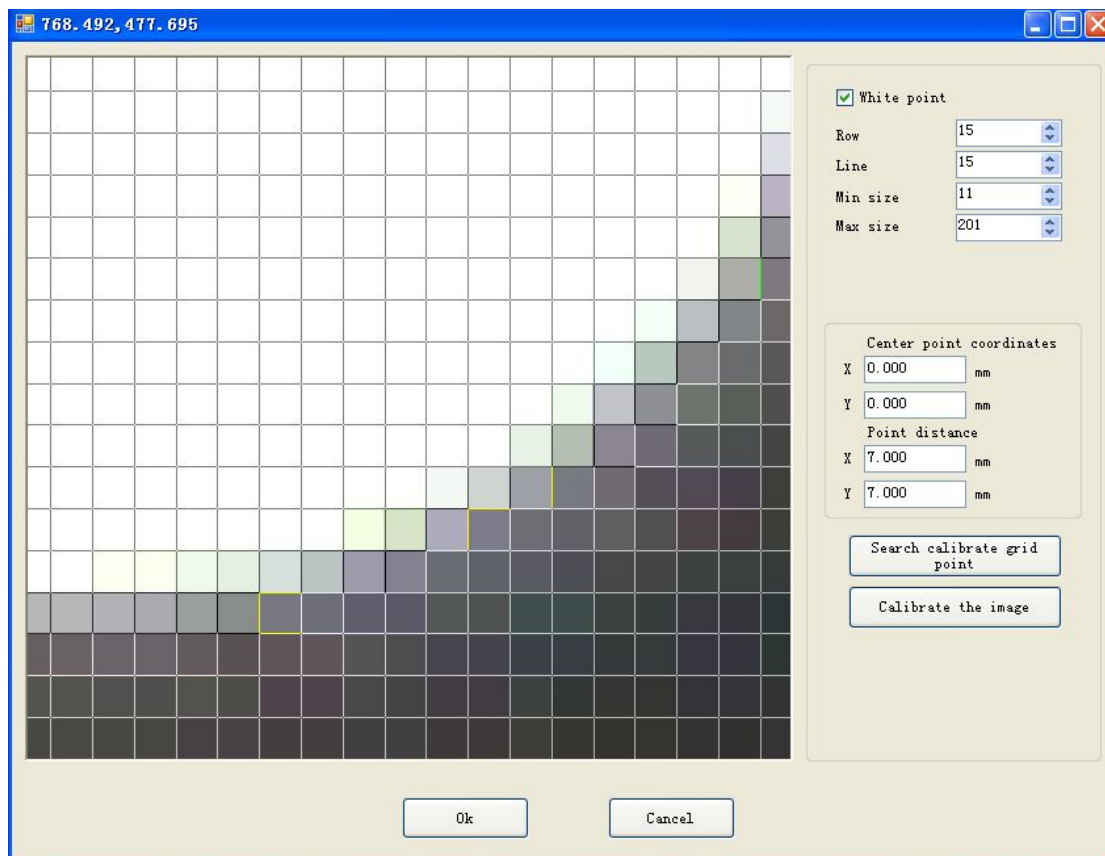
web: <http://en.bjjcz.com>

Tel:86-10-64426995

White point:when the point array is white color,please click it.

Row&Line: Row number and Line number of the point array.

Min size&Max size:Pixel number of each point,mouse wheel can magnify it,and can see the grid as follow picture, count the number of the grid in one point,set max and min size to make the grid number between the min and max pixel number.



Center point coordinates: coordinates of point array center that be chosen.

Point distance:distance between two points in the point array.

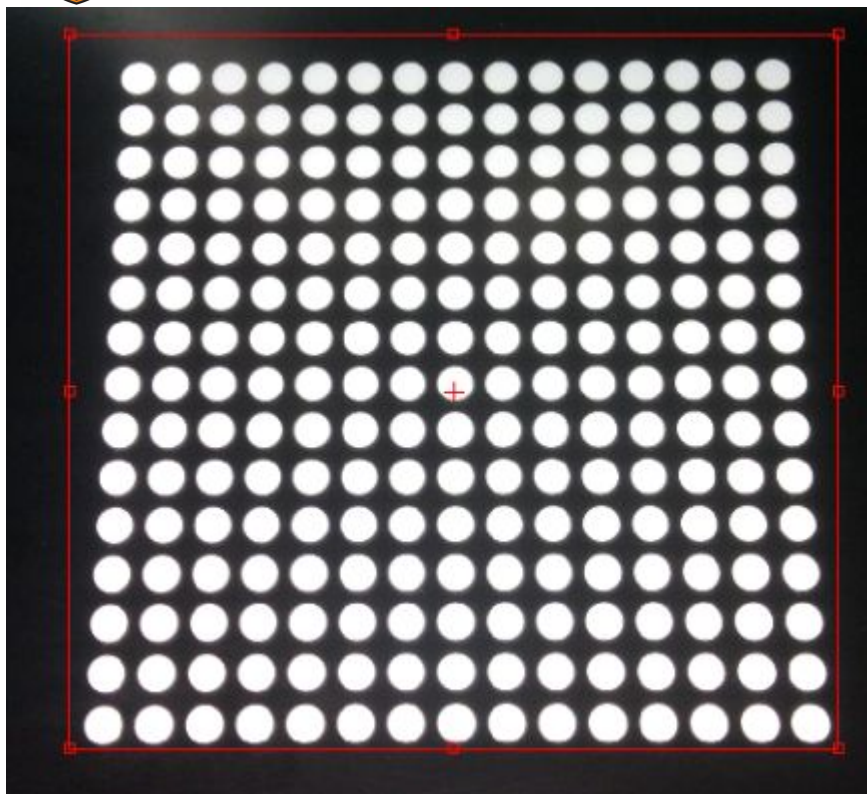
4. Then draw box to make it cover whole point array,the center of the red box is repeat with center of point array.



Beijing JCZ Technology Co., Ltd.

web: <http://en.bjjcz.com>

Tel:86-10-64426995



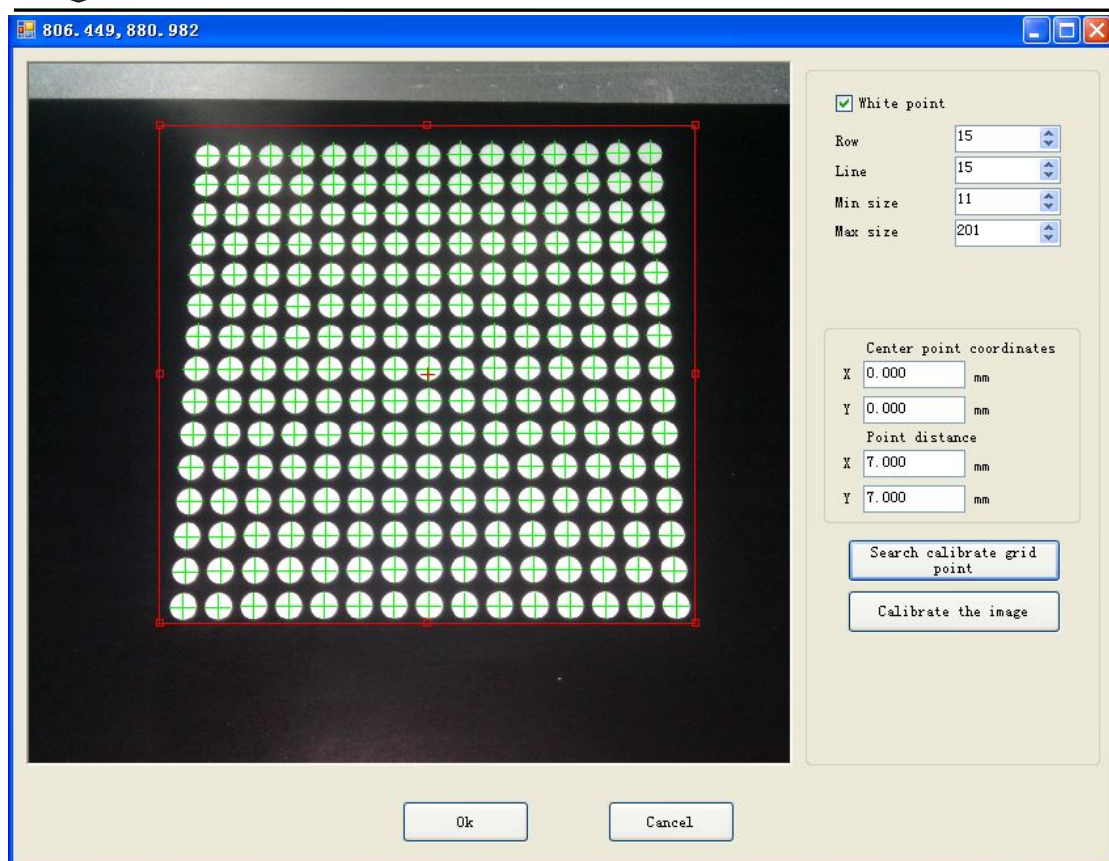
5. Click 'search calibrate grid point' then will show green color of cross in each point center.



Beijing JCZ Technology Co., Ltd.

web: <http://en.bjjcz.com>

Tel:86-10-64426995



Or will show error message:



5.Click 'Calibrate the image' will find the image change obviously.

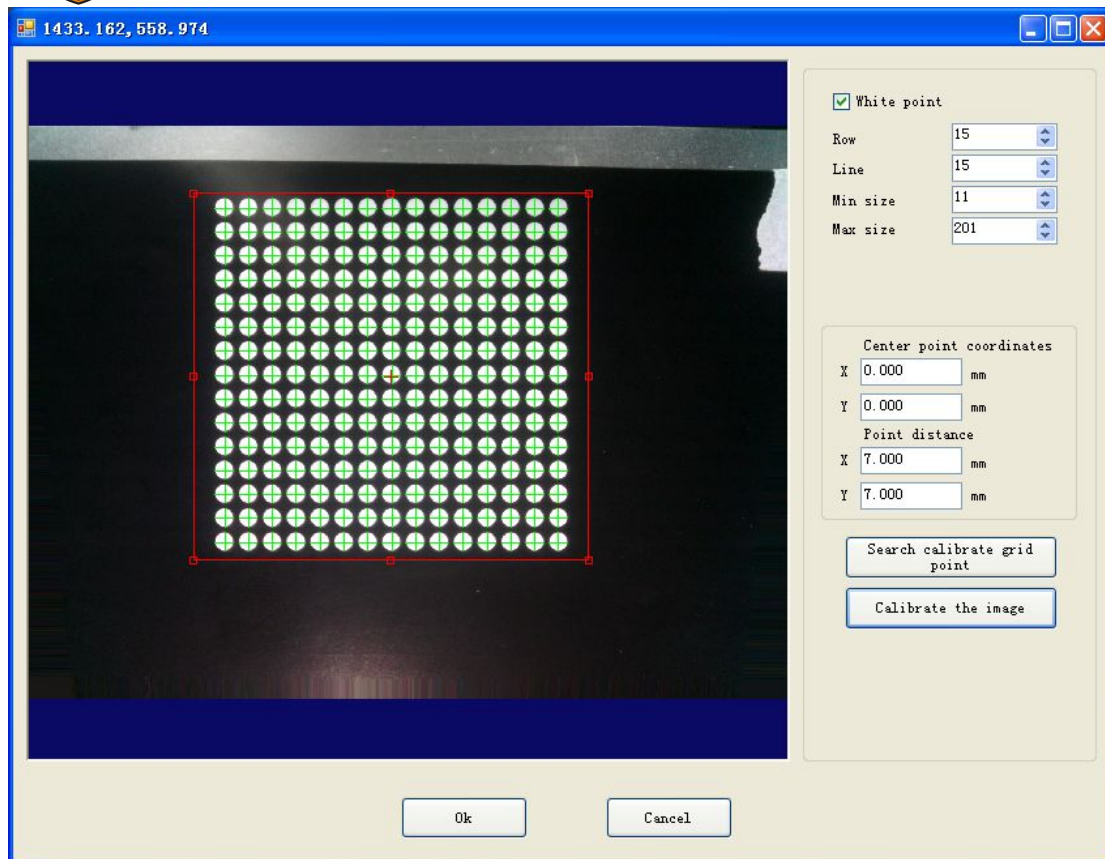




Beijing JCZ Technology Co., Ltd.

web: <http://en.bjjcz.com>

Tel:86-10-64426995



7.click OK,save calibrate file to same folder with ezcad.exe. Open the folder RES,then param.ini,make some setting.

```
CAMERACALI=1  
CAMERACALIFILENAME=CameraCalibration.cal
```

CAMERACALI=1: enable background show calibrate file

CAMERACALIFILENAME=CameraCalibration.cal:the name must same as calibrate file name.

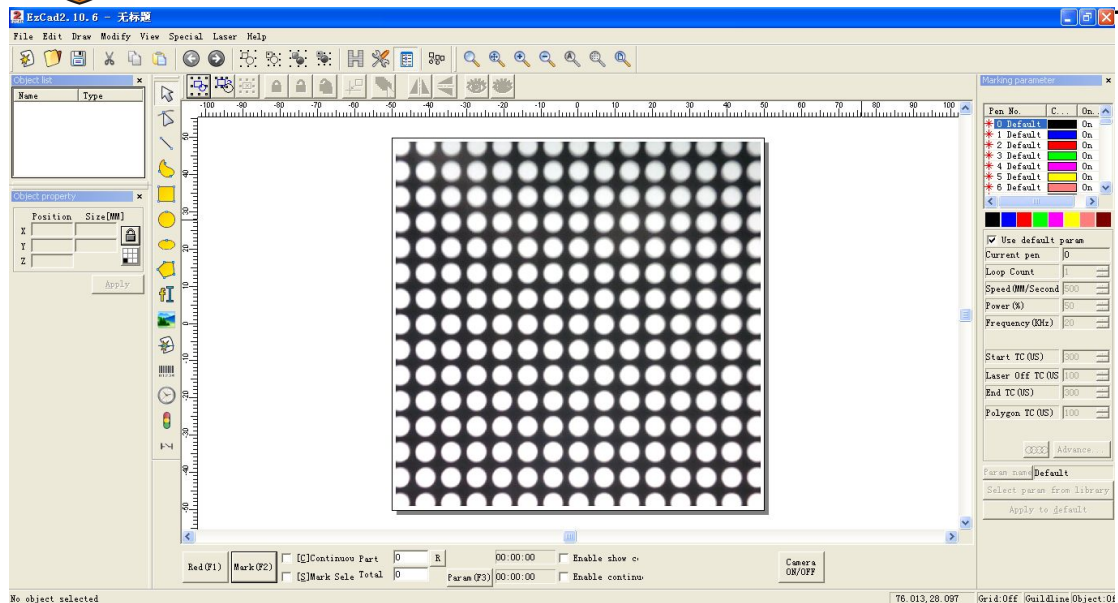
8.Now open EZCAD,it is already finish calibration, so can make mark position same as the position you see in work space. (Please don't let the PC becomes dormant)



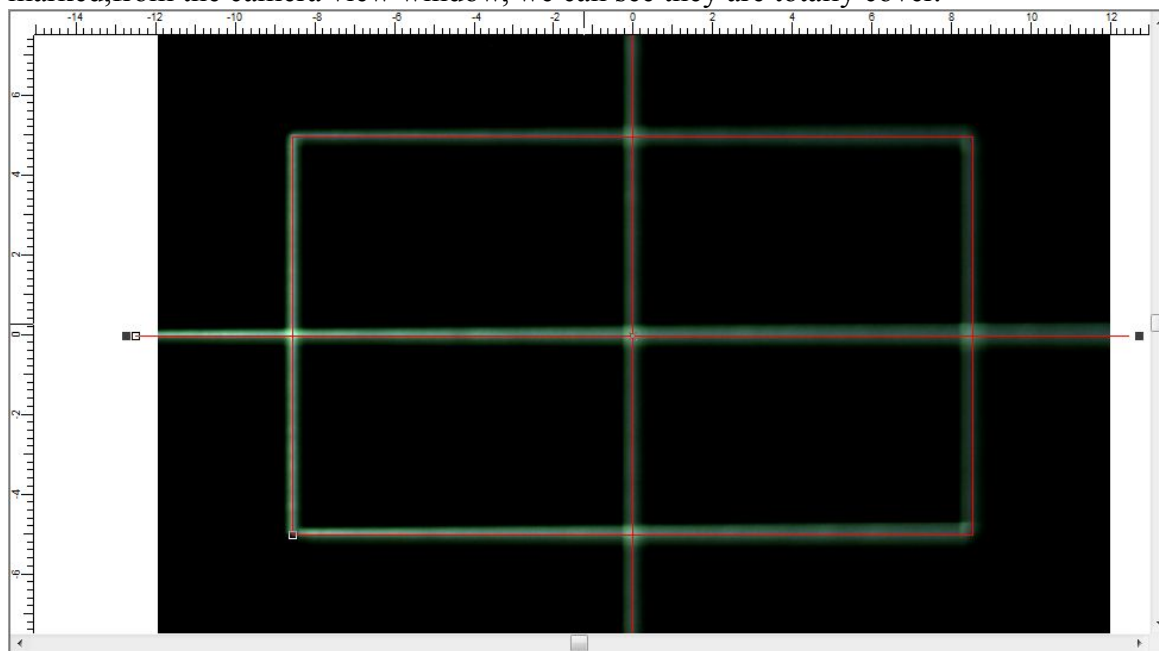
Beijing JCZ Technology Co., Ltd.

web: <http://en.bjjcz.com>

Tel:86-10-64426995



Follow is one example, red lines is what we wants to mark, white lines is what we marked, from the camera view window, we can see they are totally cover.



Because of some person reason, maybe after calibrate, the drawing object and marked result is not totally cover, now please click right key in the view area and choose 'Camera', will show follow window, change the value of x and y to calibrate the small position difference. (note: before calibrate make sure both of the x and y is 0).



Beijing JCZ Technology Co., Ltd.

web: <http://en.bjjcz.com>

Tel:86-10-64426995

Offset

OK

Cancel

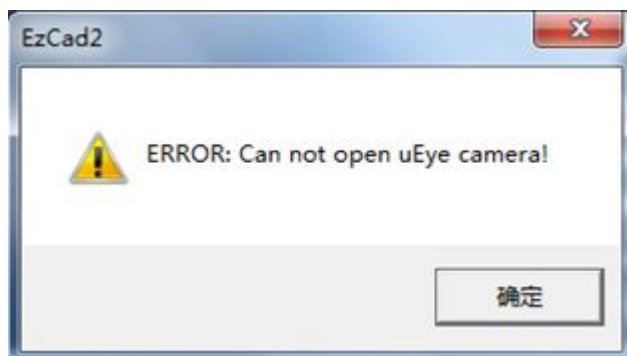
X	<input type="text" value="0"/>	MM
Y	<input type="text" value="0"/>	MM





## Usual Questions

Q1: Open ezcad show follow error



A1: In the folder RES, open param.ini, make sure CAMERATYPE=IDS.

Q2: Open Ezcad, and no background show also no on/off button

A2: No camera function opened in the dongle (or board), if dongle exist camera function but still show above problem, please set CAMERA=1 in param.ini under RES folder.

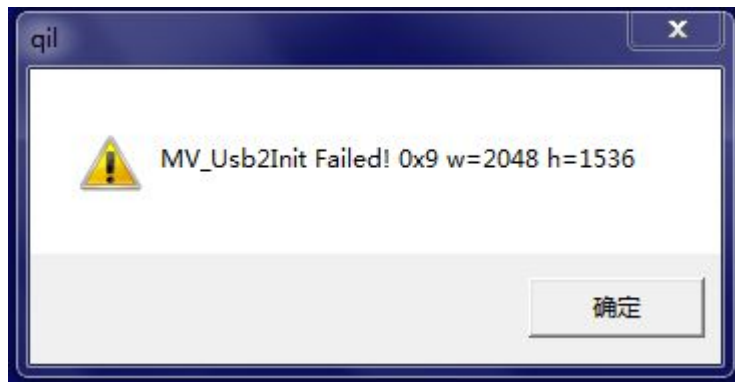
Q3: after calibrate the camera and open Ezcad, find the background result still with distortion

A3: Please make sure CAMERACALI=1 in param.ini under the folder RES. Also make sure the camera calibrate file is same name with the CAMERACALIFILENAME=CameraCalibration.cal

For example: user save the camera calibrate file as 1.cal, then here CAMERACALIFILENAME=1.cal

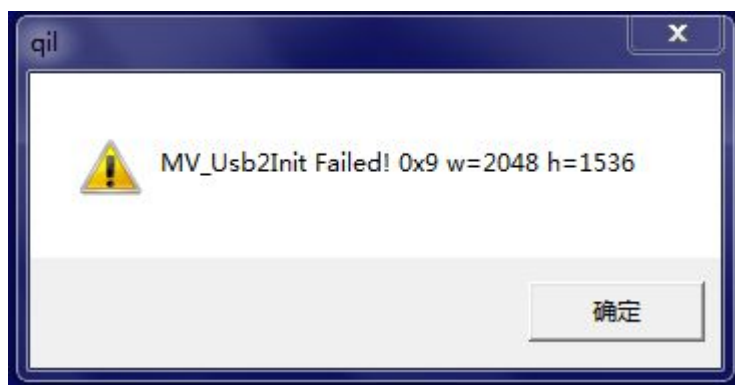


Q4: First time to use CameraCla program, show follow error

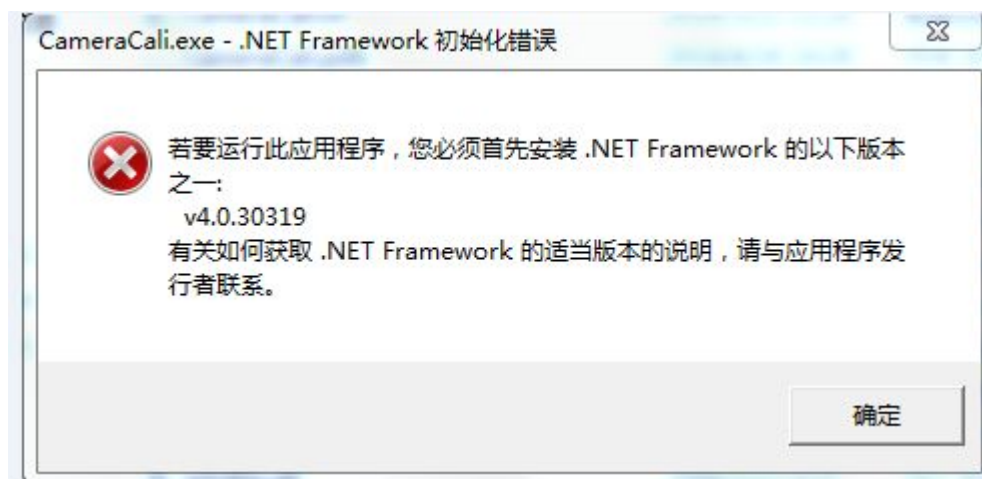


A4: please login EZCAD as Administer, then in the future will not show this error. If still show this error, please check whether the CameraName (in the file of CameraCla.ini) same as the camera.

CameraName=JCZUSB



Q5: Double click Cameracli show follow error





Beijing JCZ Technology Co., Ltd.

web: <http://en.bjjcz.com>

Tel:86-10-64426995

A5: Please make sure whether installed .net in the computer.(there is a dotNetFx40\_Full\_x86\_x64 in the CD, please install it)

Q6: Double click Cameracali.exe will show follow

A6: Please contact with BJJCZ