

Pulse-width Tuning Settings for JPT-M Series Laser Using JCZ

- 1、YDFLP-M1+ has 11 preset pulse-widths to be selected (discontinuous):

6ns、9ns、20ns、30ns、45ns、60ns、80ns、100ns、150ns、200ns、250ns

Pulse repetition frequency (PRF) tuning range (continuously tunable): 1KHz~1000kHz

YDFLP-M6+ has 16 preset pulse-widths to be selected (discontinuous):

1ns、2ns、4ns、6ns、9ns、13ns、20ns、30ns、45ns、55ns、60ns、80ns、100ns、150ns、200ns、250ns

PRF tuning range (continuously tunable): 1 kHz~1000kHz

2、Pulse-width Settings in JCZ

- (1) Install marking control card with adjustable pulse width like JCZ, LMC and FIBER and corresponding softwares supporting version 2.6 or higher.

Note: V1 marking control card cannot adjust pulse width;

V2 marking control card can adjust pulse width;

PCI marking control card cannot adjust pulse width.

- (2) After successful installation, click the JCZ marking software icon EzCad2, as shown in Figure 1:

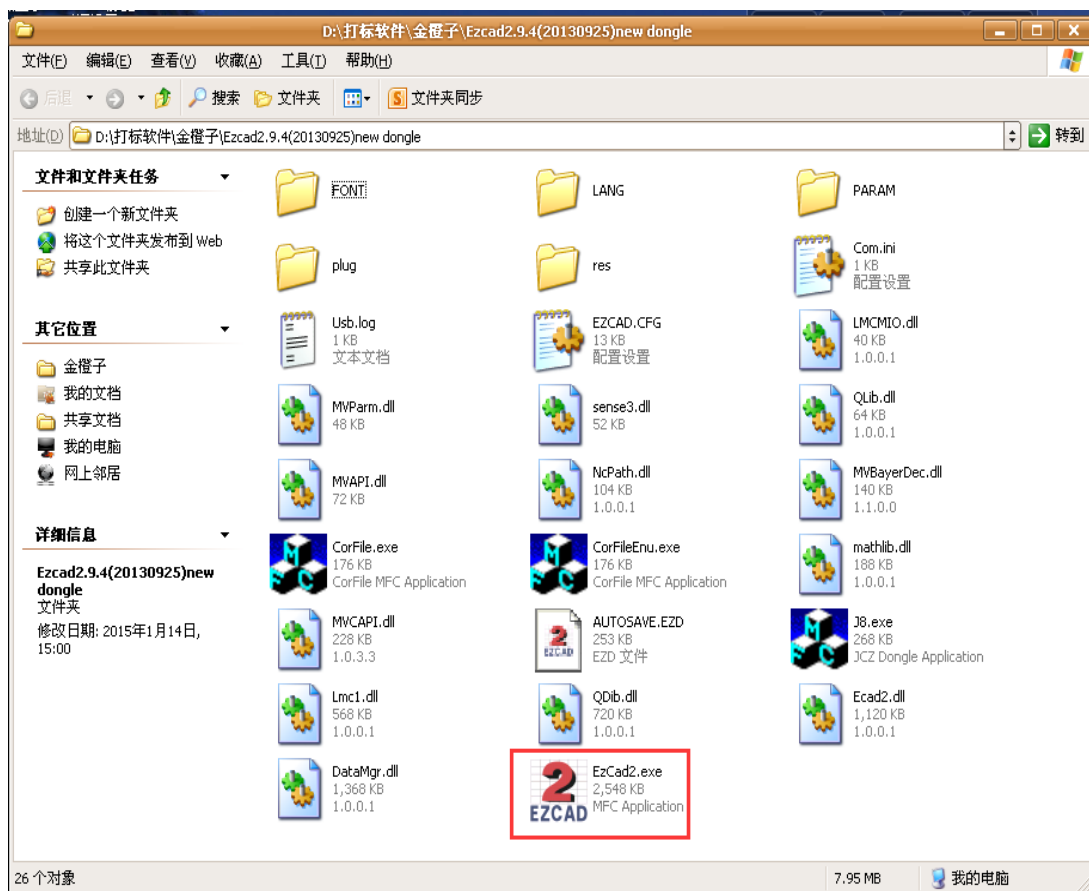


Figure 1

(3) Open JCZ and enter the main interface, find Param (F3) below the main interface, as shown in Figure 2.

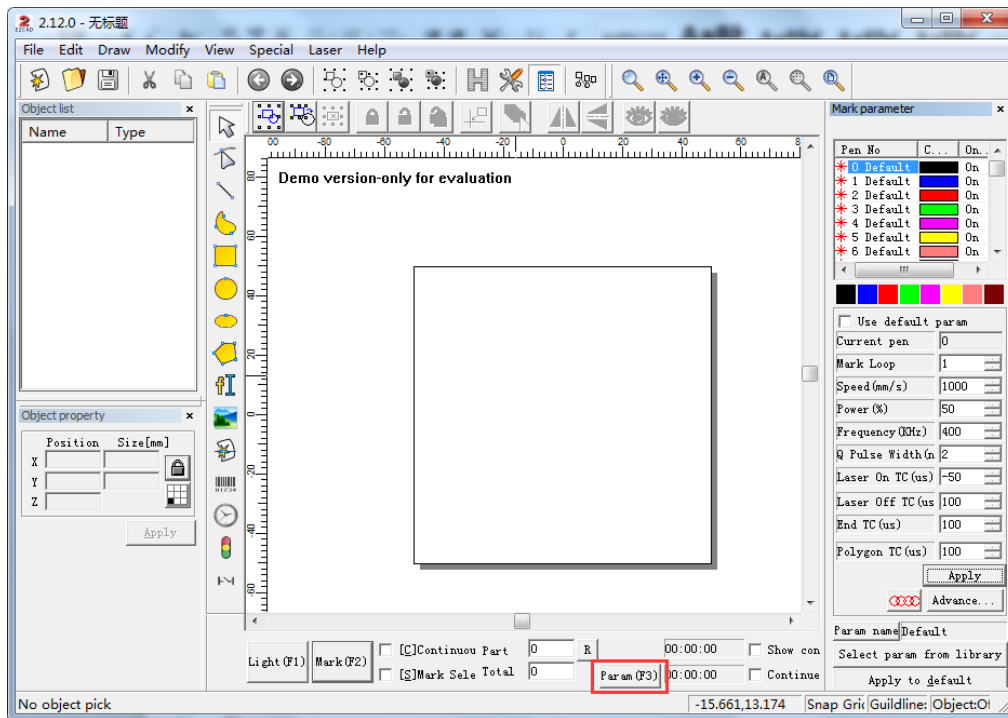


Figure 2

(4) Click Param (F3) and select Configuration Parameters, as shown in Figure 3. Enter Laser Control property page. Select Fiber for Laser Type and IPG_YLPM for Fiber Serial, check Enable Pulse Width, and click confirm.

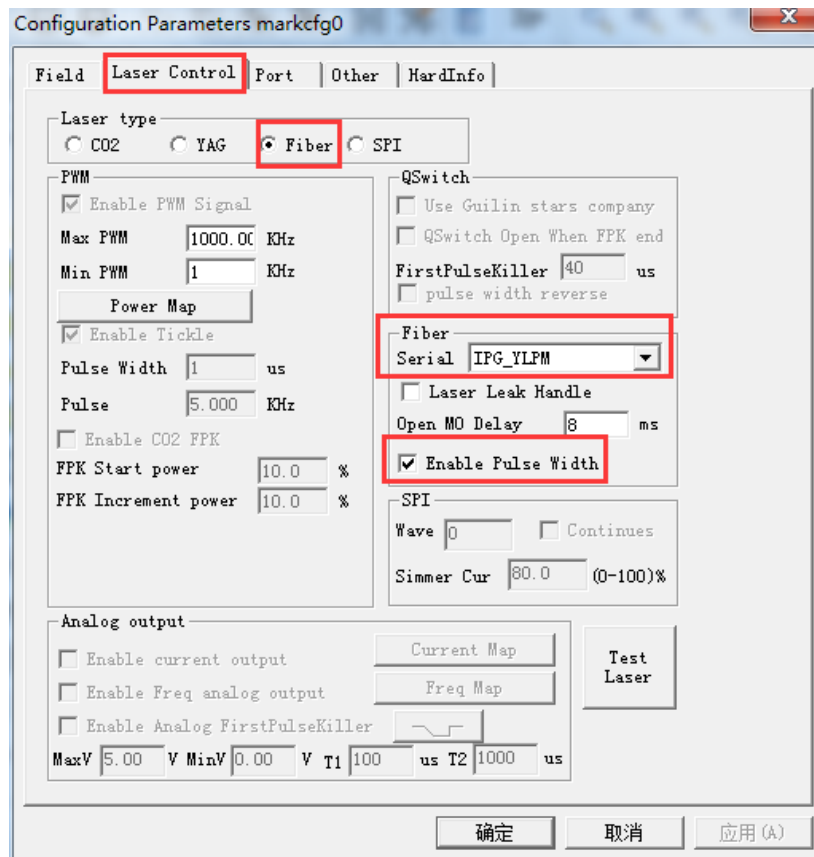


Figure 3

(5) Back to the main interface. Uncheck Use Default param and adjust pulse width of YDFLP-M Series Laser in Q Pulse Width, as shown in Figure 4.

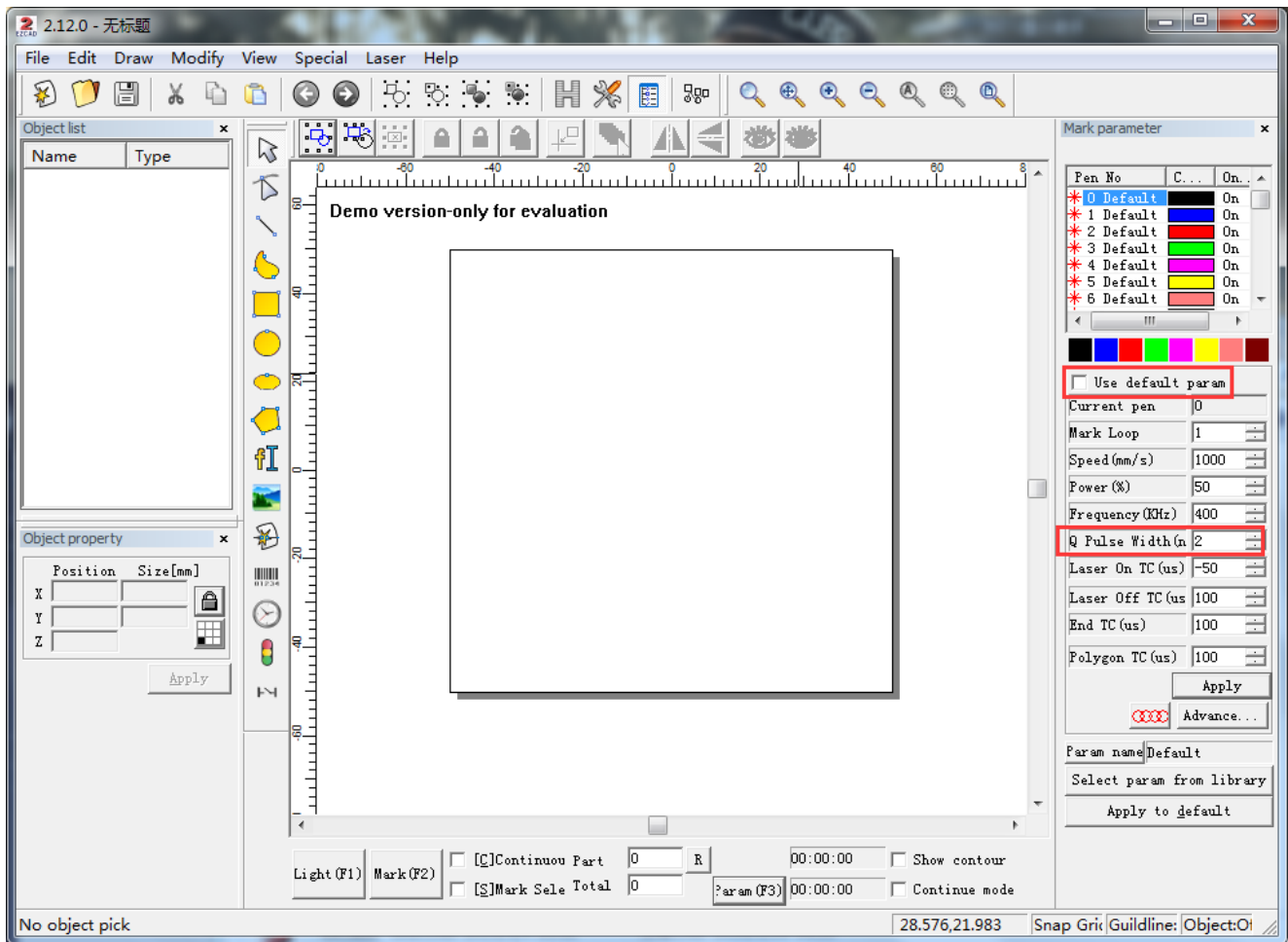


Figure 4

3、PRF tuning range settings in JCZ

Click Param (F3) and select Configuration Parameters> Laser Control, as shown in Figure 5. Set the desired maximum and minimum PWM (within the specified tuning range for the fiber laser model).

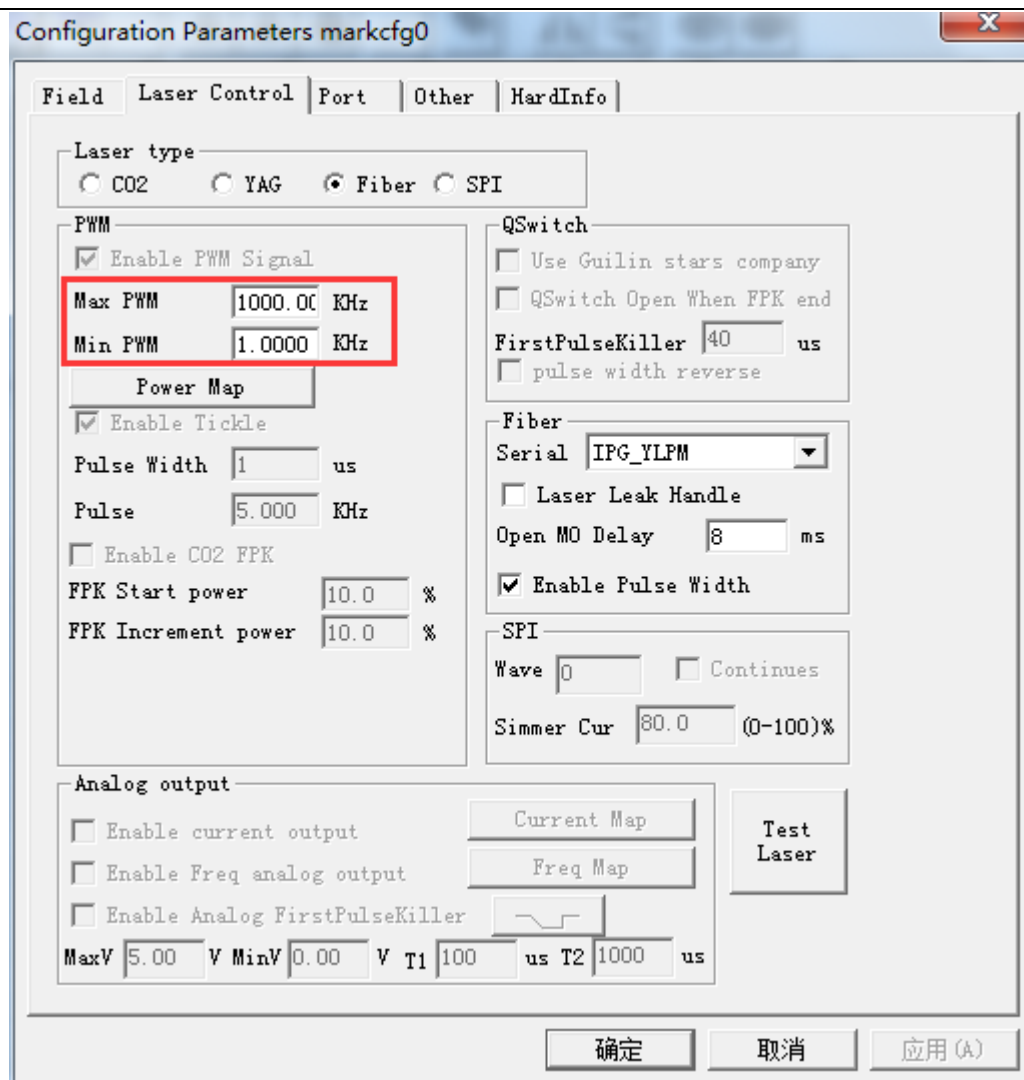


Figure 5

Note: For YDFLP-M1+ and YDFLP-M6+, the PWM range is from 1 KHz to 1000 KHz.