



Video intr...

Company in...

Client cas...

Technic Su...

Text heigh...

TCP/IP com...

SQL

About soft...

IN inport ...

How to cha...

Corfile-9 ...

Check the ...

Camera sof...

About foot...

Contact Us

Help cente...

Recruitmen...

About Us

Your present location: Corfile-9 point mode

Corfile-9 point mode

1.Click CorfileEnu.exe



CorFileEnu.exe

CorFile MFC App...

you can get a dialog:

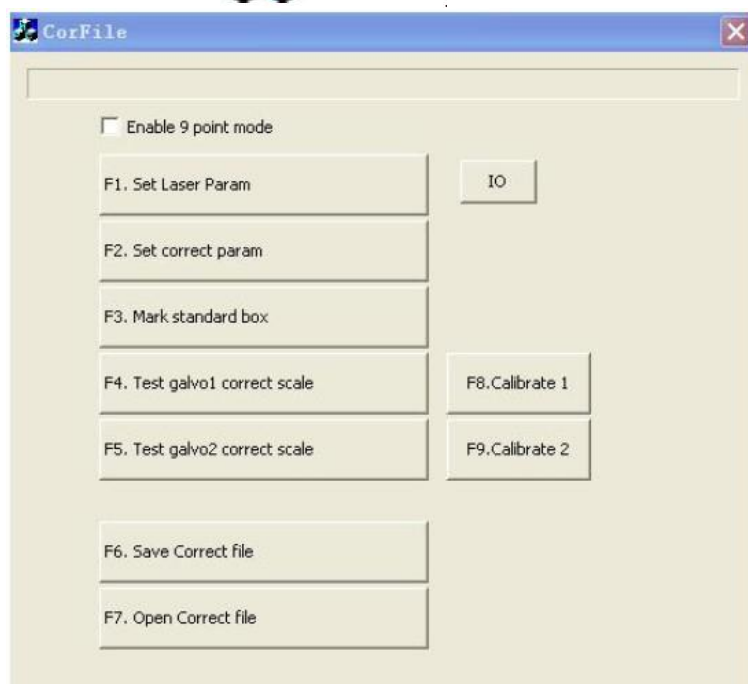


Fig 1

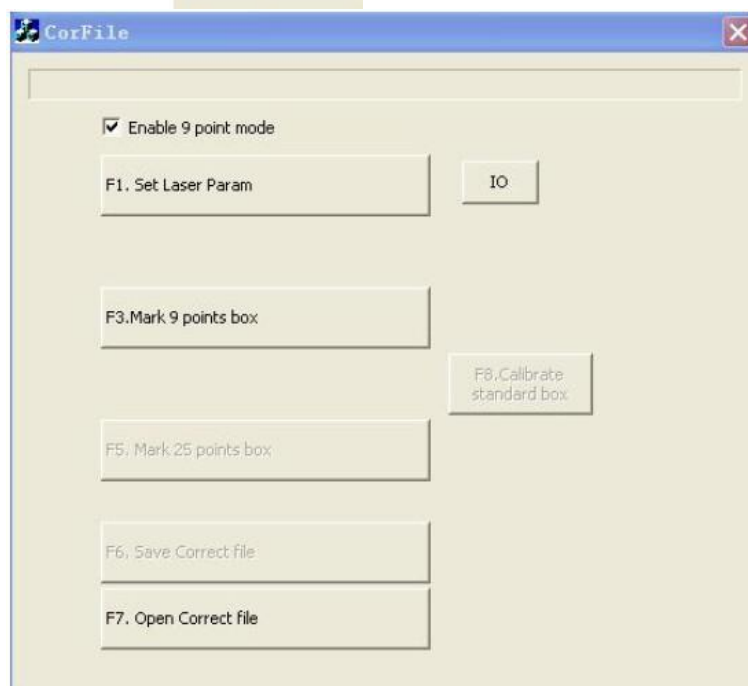
2.Look this,check ☒ Enable 9 point mode ,then the dialog change for the following :

Fig 2

3.Click f1. set laser param.

4. Click f3, F3, Mark 9 points box, get other dialog, in that you can infilling distance:

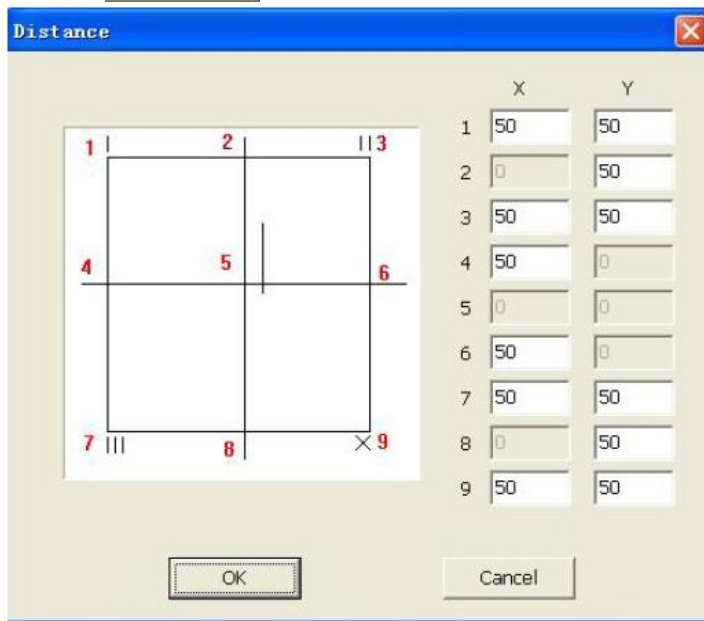


Fig 3

Will fill in the distance to the appropriate location, then click the OK button.

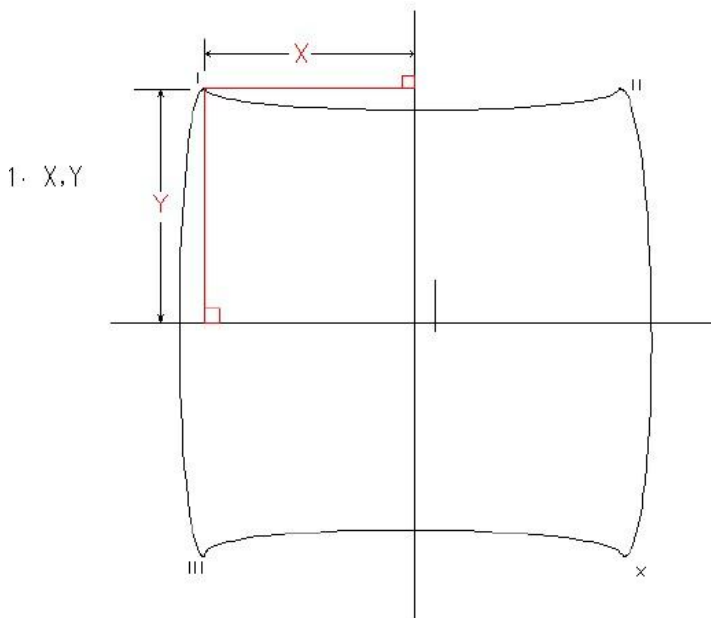


Fig 4

5. Dialog is following:

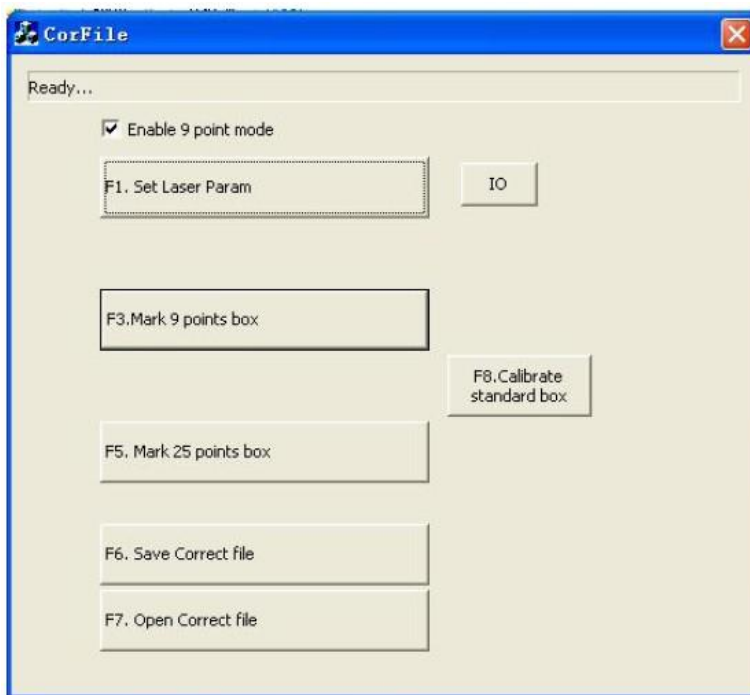


Fig 5

Click F8, Marking out a graph, Survey this graph, With a diagonal criss-cross lines and the interval of 5mm square and the edges are straight, show that high accuracy calibration; Otherwise, need to repeat the above steps.

6、click F6 save correct file.

7、open ezcad.exe software, and click f3, check Field and check Use the corrected file:

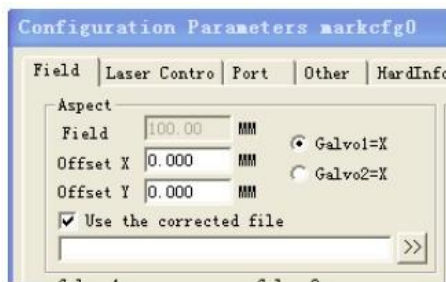


Fig 6

Click >>, check file

8. Restart the software



Add: M3 building, No1 East Road of Jiuxianqiao, Chaoyang district, Beijing China

Post code: 100016 Email: technic@bjjcz.com overseas@bjjcz.com

Copyright Beijing JCZ 京ICP备05011043号 Poweres by www.300.cn

Related



[skype](#) [skype](#) [skype](#) [skype](#)