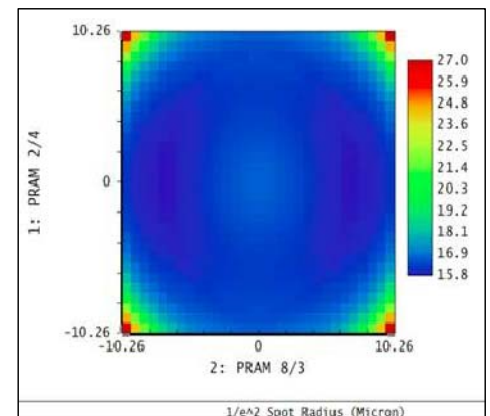


REVISIONS			
REV	DATE	DESCRIPTION	APPROVED
Specification			
Item NO.		SL-1064-112-163G	
Wavelength		1064nm	
EFL		163mm	
BFL		195mm	
WD		190.4mm	
Scan angle		$\pm 20^\circ$	
Scan length		158.4mm	
Scan field		112mmx112mm	
Input beam EP		10mm	
M1-M2		20mm	
M2-lens center		17mm	
M2-mount edge		11.23mm	
Spot size range(1/e ²)		32~54um	
Outer diameter		89mm	
Thread		M85X1	
Total length		44mm	
With Protective window		YES	
Transmission		>95%	
Series NO.			



PROPRIETY AND CONFIDENTIAL
ALL THE INFORMATION CONTAINED IN THIS DATASHEET IS THE SOLE PROPERTY OF WAVELENGTH OPTO-ELECTRONIC(S) PTE. LTD. WE RESERVED THE RIGHT TO CHANGE CONTENTS IN THE DATASHEET IN THE COURSE OF PRODUCT IMPROVEMENT AT ANY TIME WITHOUT NOTIFICATION.

TOLERANCES UNLESS SPECIFIED: 0.1

SURFACE: Black Anodize

MATERIAL: AL

UNIT: mm

SCALE: 1:2

NAME: DINGWEN
DATE: 2016.7.20
DRAWN: DINGWEN
CHECKED:
SL-1064-112-163G

Wavelength
Opto-Electronic (S)

NJSL-025B

SHEET 1 OF 1

REV. 0