



# REDSAIL TECH CO., LTD

Add: B218/F2, Qilu Software Plaza No.1 Shunhua Road, Jinan Hi-tech  
Zone, Shandong, China ZIP: 250101  
Tel: +86-531-86516855/56/57 Fax: +86-531-86516858  
Email: [sales@redsailcutters.com](mailto:sales@redsailcutters.com)

---

## User Manual for Cutmate 2.3

### Coreldraw driver

#### Installation Guide

- 1, Please select the corresponding option from Coreldraw Graphics suit 11, 12, X3 or X5 first.
- 2, Please Plug the USB dongle into the USB port of your PC.
- 3, Run the Cutmate Setup program in this CD.
- 4, The installation password is "redsail".
- 5, If your Coreldraw software is not correctly installed, the cutmate will inform you to select the directory of the coreldraw software.
- 6, After installation, you can enjoy it.

#### User Guide

The Cutmate2.3 can work in two modes: Slave mode and Master mode.

##### Slave mode:

This mode is common used for Coreldraw output directly.

- 1, Please confirm the USB dongle is in your USB port.
- 2, Run the Coreldraw software, a floating button will be displayed in the top right corner of the coreldraw.
- 3, After designing in Coreldraw, click the "Send", then the new window of Cutmate will be opened. You can select the model of the machine and the "COM" port, and then cut/plot out.

##### Master mode:

This mode is used for opening the HPGL file only.

- 1, Please confirm the USB dongle is in your USB port.
- 2, Run the Cutmate.
- 3, Open the PLT file.
- 4, Select the correct "COM" port, and cut/plot out.

#### Notes:

- 1, If the Cutmate don't find the USB dongle, the program will be stopped, you must reinstall the Cutmate.
- 2, If you can't find the floating button, we suggest you to check your setting.

<http://www.redsailcutters.com>



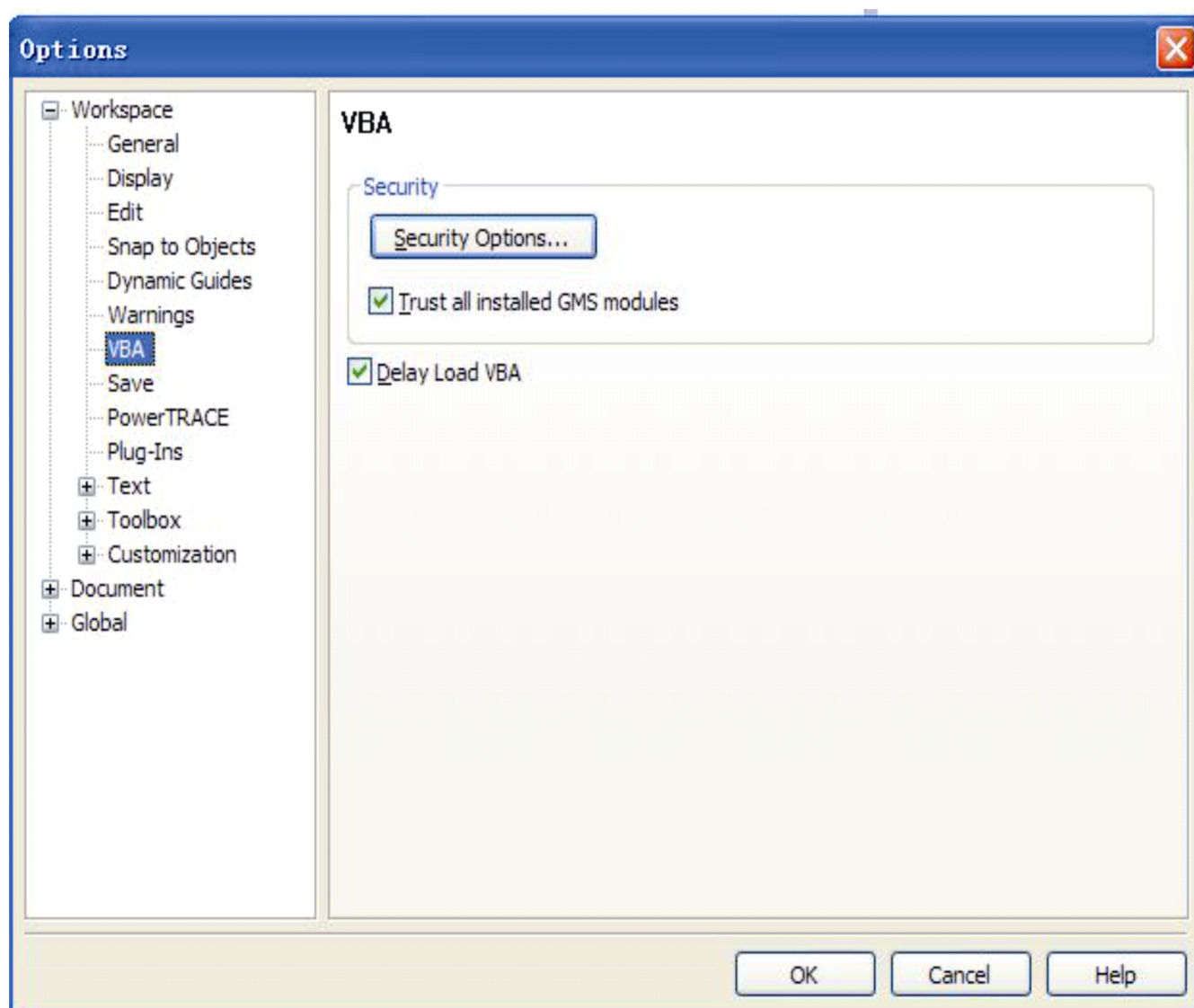
# REDSAIL TECH CO., LTD

Add: B218/F2, Qilu Software Plaza No.1 Shunhua Road, Jinan Hi-tech  
Zone, Shandong, China ZIP: 250101  
Tel: +86-531-86516855/56/57 Fax: +86-531-86516858  
Email: [sales@redsailcutters.com](mailto:sales@redsailcutters.com)

Firstly, please check if your Cutmate is installed well.

Secondly, we suggest you to select the following setting, about the installation of the software Coreldraw.

(1), After the installation of Coreldraw, please open the software first and make the settings as below Tools—options—VBA. Then close the software Coreldraw.





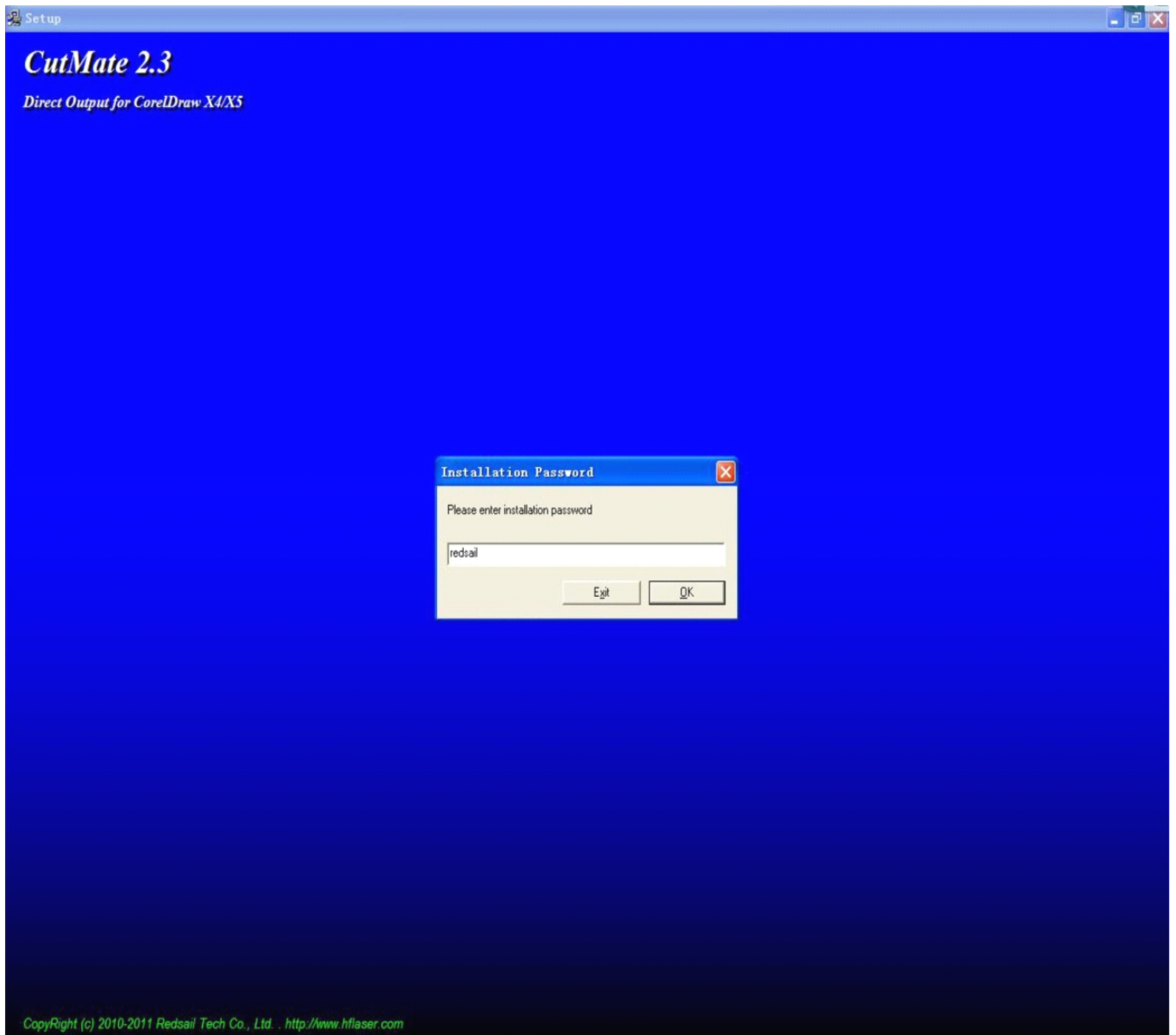
# REDSAIL TECH CO., LTD

Add: B218/F2, Qilu Software Plaza No.1 Shunhua Road, Jinan Hi-tech  
Zone, Shandong, China ZIP: 250101

Tel: +86-531-86516855/56/57 Fax: +86-531-86516858

Email: [sales@redsailcutters.com](mailto:sales@redsailcutters.com)

(2) Please install the program of Cutmate2.3.



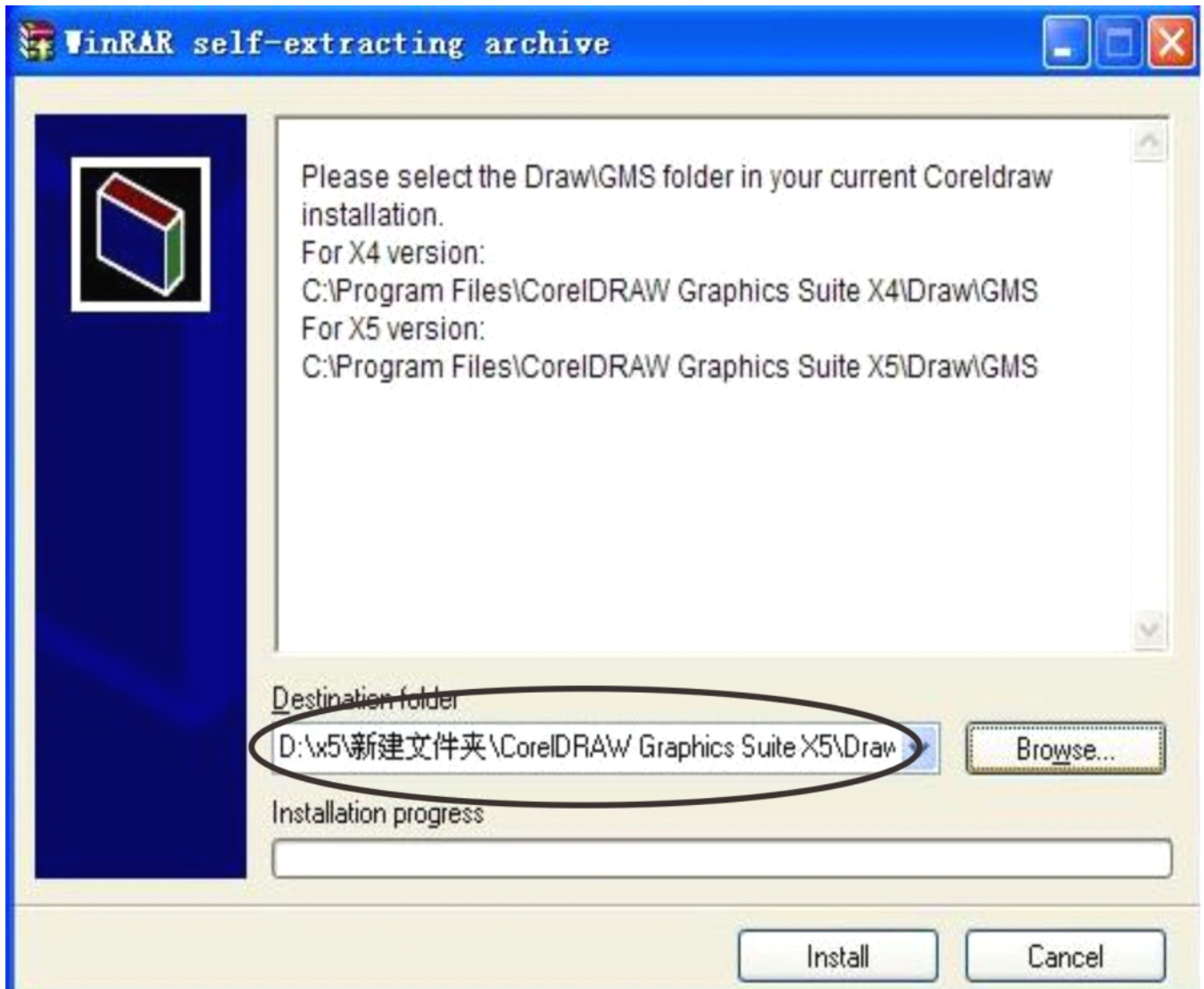
<http://www.redsailcutters.com>



## REDSAIL TECH CO., LTD

Add: B218/F2, Qilu Software Plaza No.1 Shunhua Road, Jinan Hi-tech  
Zone, Shandong, China ZIP: 250101  
Tel: +86-531-86516855/56/57 Fax: +86-531-86516858  
Email: [sales@redsailcutters.com](mailto:sales@redsailcutters.com)

(3) When install Cutmate2.3, please make sure that the path will be saved in the file Coreldraw Draw/GMS.

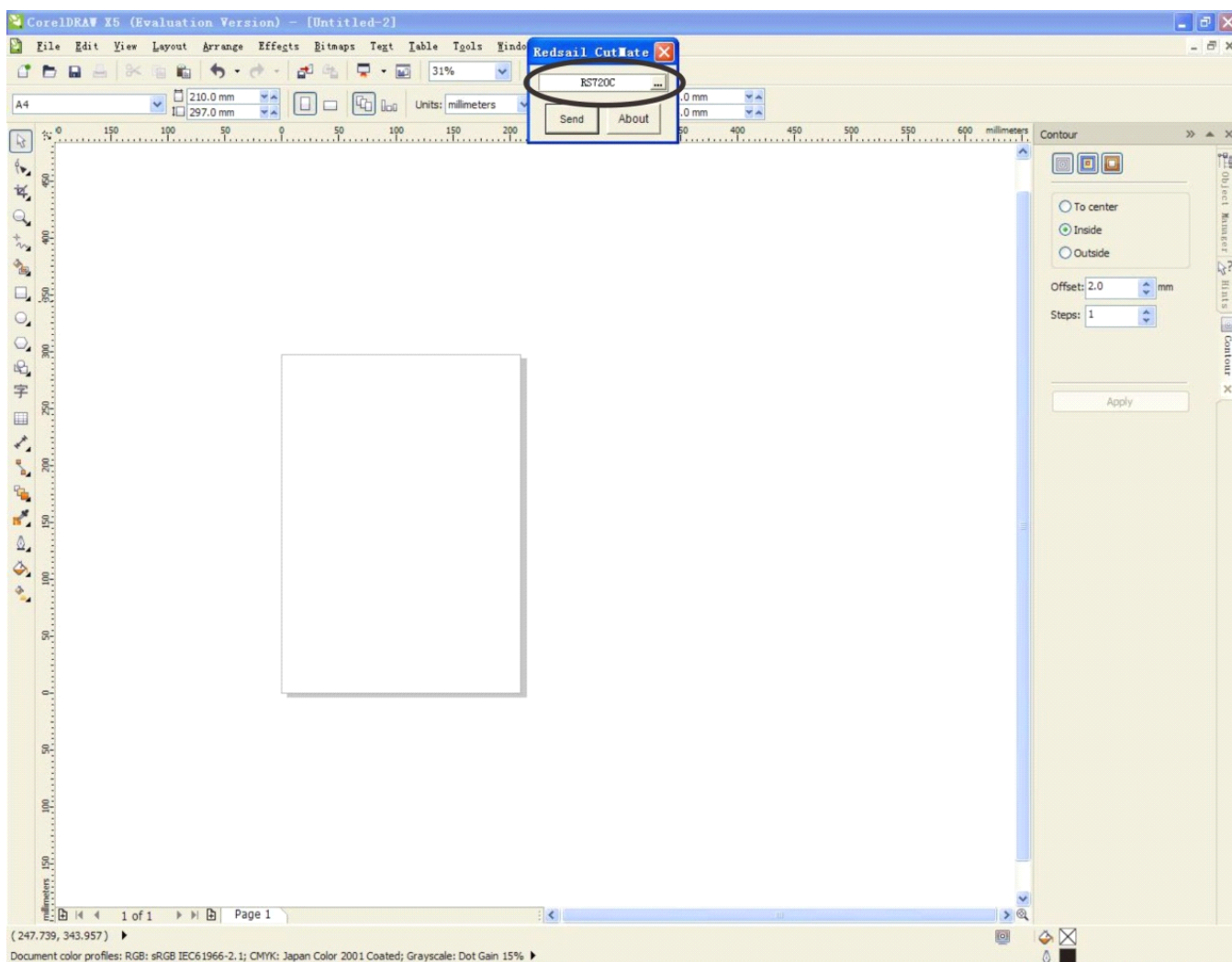




# REDSAIL TECH CO., LTD

Add: B218/F2, Qilu Software Plaza No.1 Shunhua Road, Jinan Hi-tech Zone, Shandong, China ZIP: 250101  
Tel: +86-531-86516855/56/57 Fax: +86-531-86516858  
Email: [sales@redsailcutters.com](mailto:sales@redsailcutters.com)

(4) Please open the software Coreldraw, then a floating button will appear, then choose your plotter model.



3, If the Artwords you output are not smooth when using Coreldraw, we suggest you regulate "Curve resolution". Take the ring for instance. Please see the pictures below.

<http://www.redsailcutters.com>



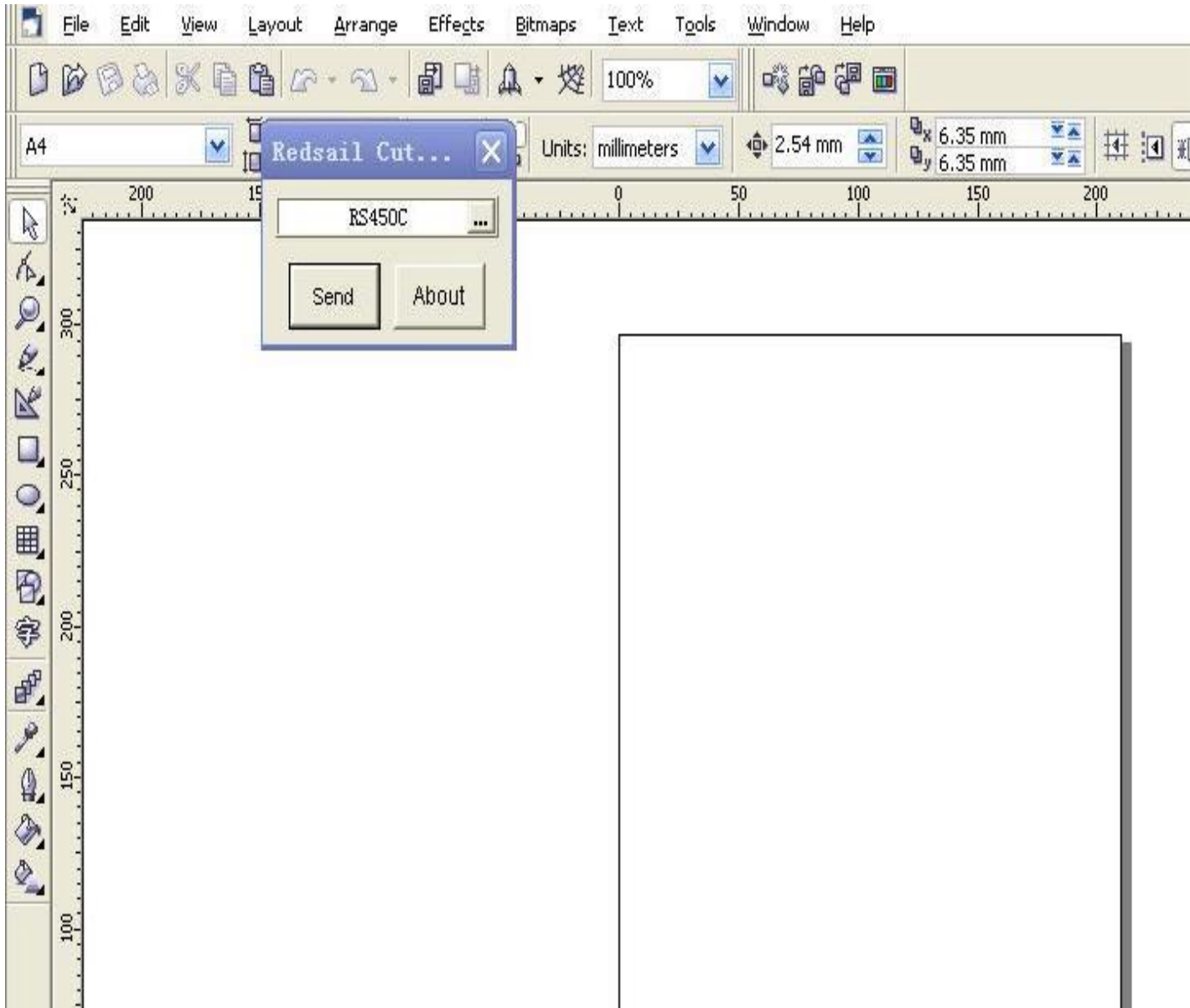
# REDSAIL TECH CO., LTD

Add: B218/F2, Qilu Software Plaza No.1 Shunhua Road, Jinan Hi-tech Zone, Shandong, China ZIP: 250101

Tel: +86-531-86516855/56/57 Fax: +86-531-86516858

Email: [sales@redsailcutters.com](mailto:sales@redsailcutters.com)

Picture 1: Please open the software.







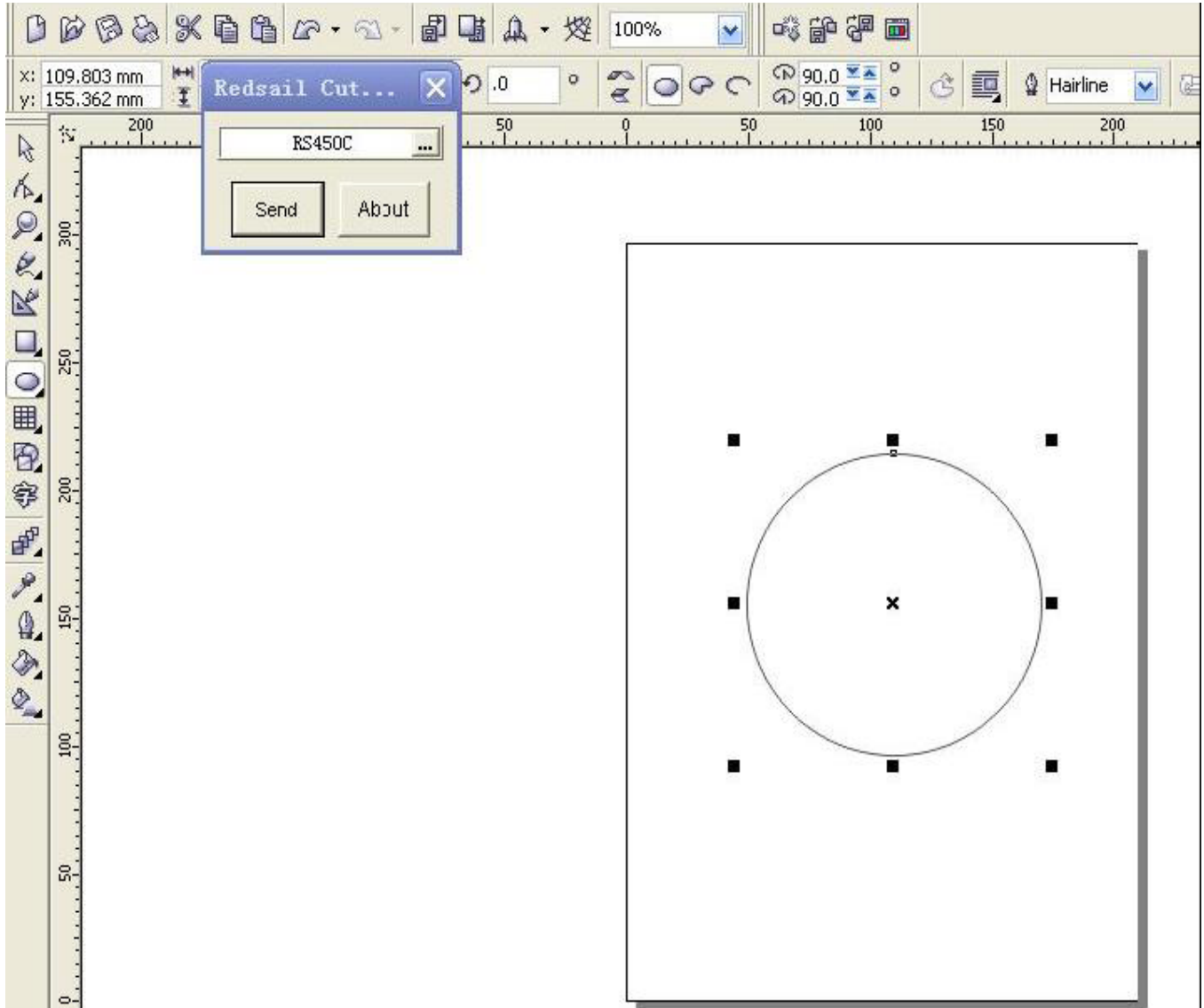
# REDSAIL TECH CO., LTD

Add: B218/F2, Qilu Software Plaza No.1 Shunhua Road, Jinan Hi-tech  
Zone, Shandong, China ZIP: 250101

Tel: +86-531-86516855/56/57 Fax: +86-531-86516858

Email: [sales@redsailcutters.com](mailto:sales@redsailcutters.com)

Picture 2: Draw a ring.





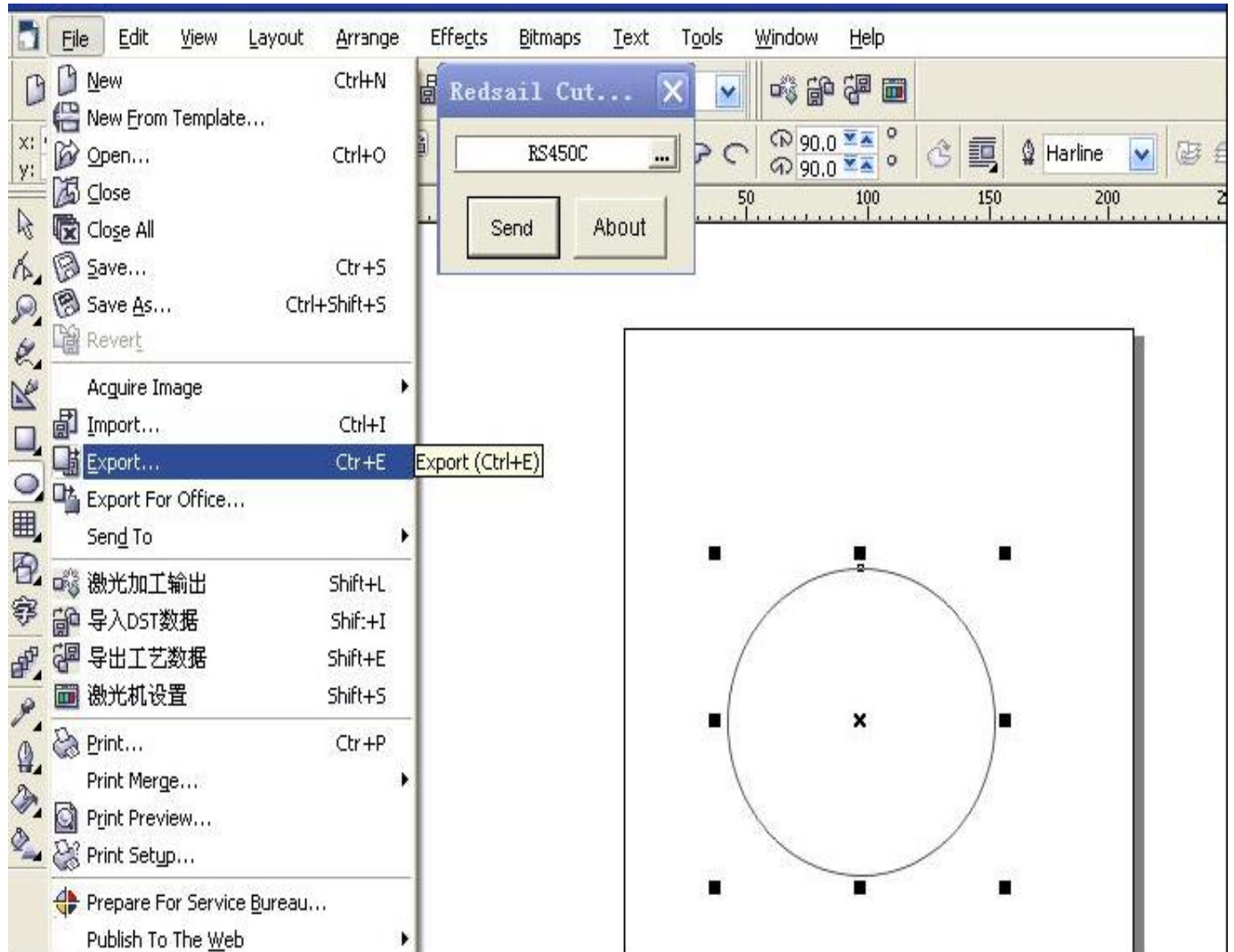
# REDSAIL TECH CO., LTD

Add: B218/F2, Qilu Software Plaza No.1 Shunhua Road, Jinan Hi-tech Zone, Shandong, China ZIP: 250101

Tel: +86-531-86516855/56/57 Fax: +86-531-86516858

Email: [sales@redsailcutters.com](mailto:sales@redsailcutters.com)

Picture 3: Click the "Export" in the "File".



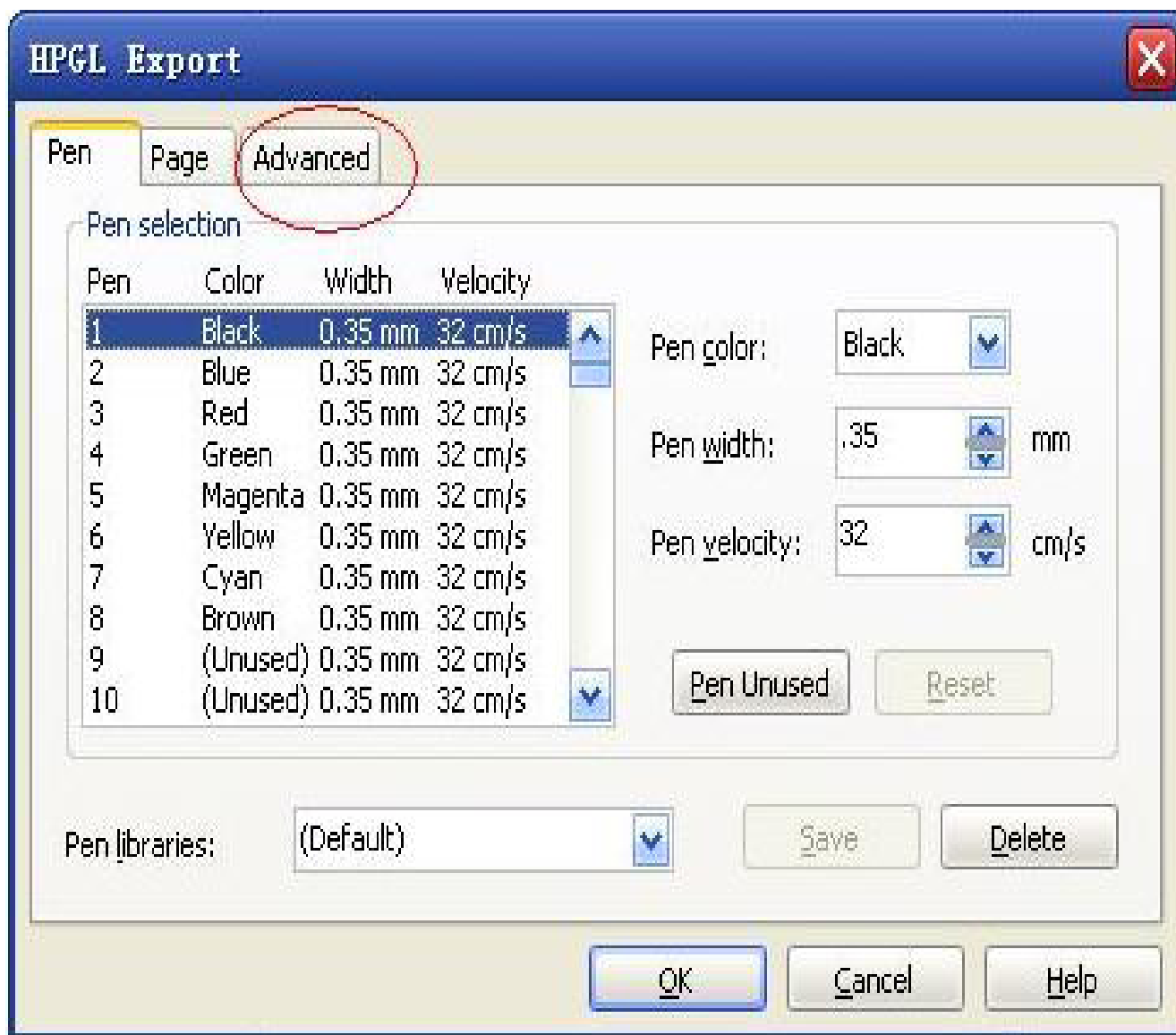




# REDSAIL TECH CO., LTD

Add: B218/F2, Qilu Software Plaza No.1 Shunhua Road, Jinan Hi-tech  
Zone, Shandong, China ZIP: 250101  
Tel: +86-531-86516855/56/57 Fax: +86-531-86516858  
Email: [sales@redsailcutters.com](mailto:sales@redsailcutters.com)

Picture 4: See the following window. Please click "Advance".





# REDSAIL TECH CO., LTD

Add: B218/F2, Qilu Software Plaza No.1 Shunhua Road, Jinan Hi-tech  
Zone, Shandong, China ZIP: 250101  
Tel: +86-531-86516855/56/57 Fax: +86-531-86516858  
Email: [sales@redsailcutters.com](mailto:sales@redsailcutters.com)

Picture 5: You find the figure of "Curve resolution" is ". 5".

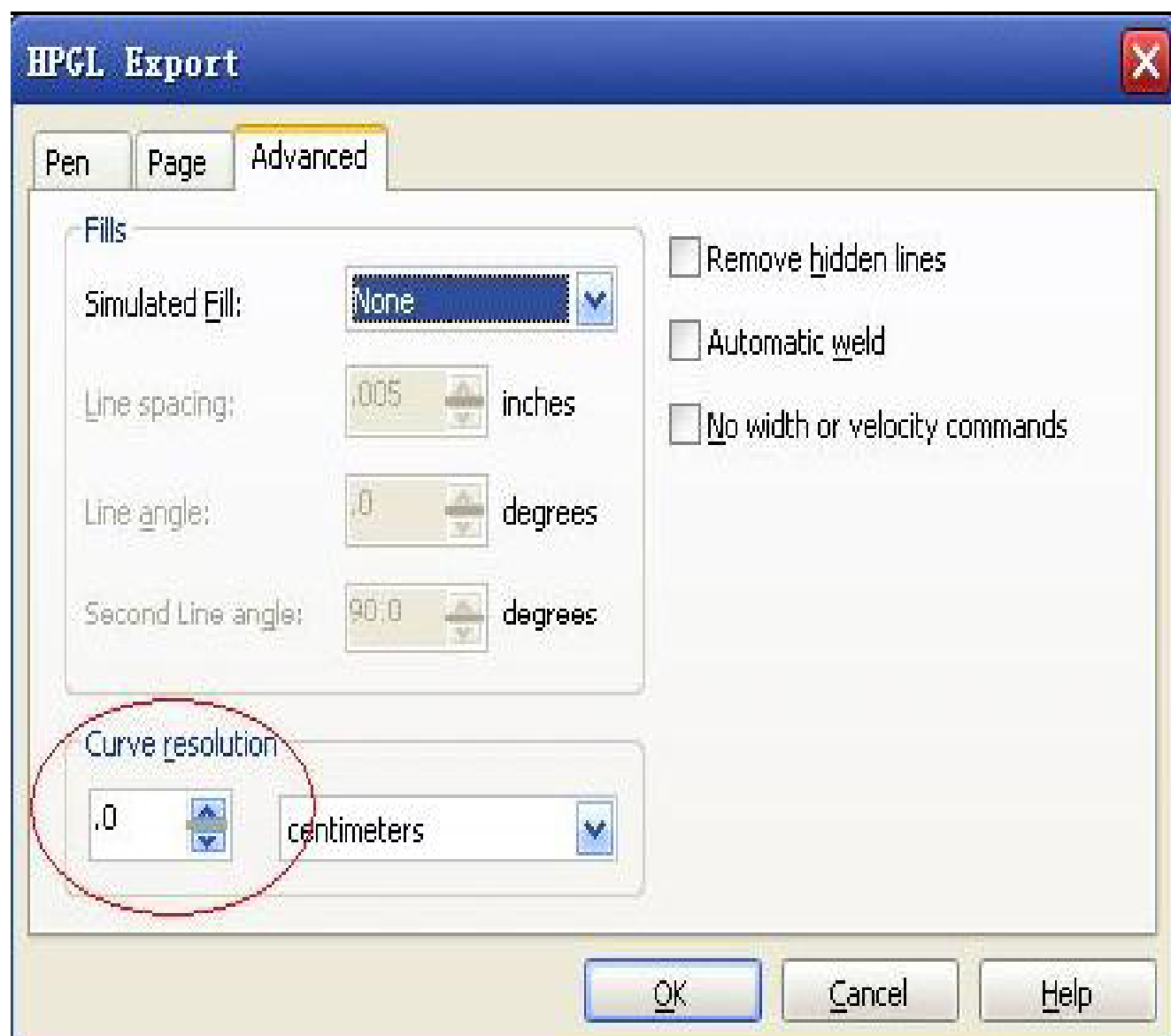




# REDSAIL TECH CO., LTD

Add: B218/F2, Qilu Software Plaza No.1 Shunhua Road, Jinan Hi-tech  
Zone, Shandong, China ZIP: 250101  
Tel: +86-531-86516855/56/57 Fax: +86-531-86516858  
Email: [sales@redsailcutters.com](mailto:sales@redsailcutters.com)

Picture 6: Change the figure to “. 0”.





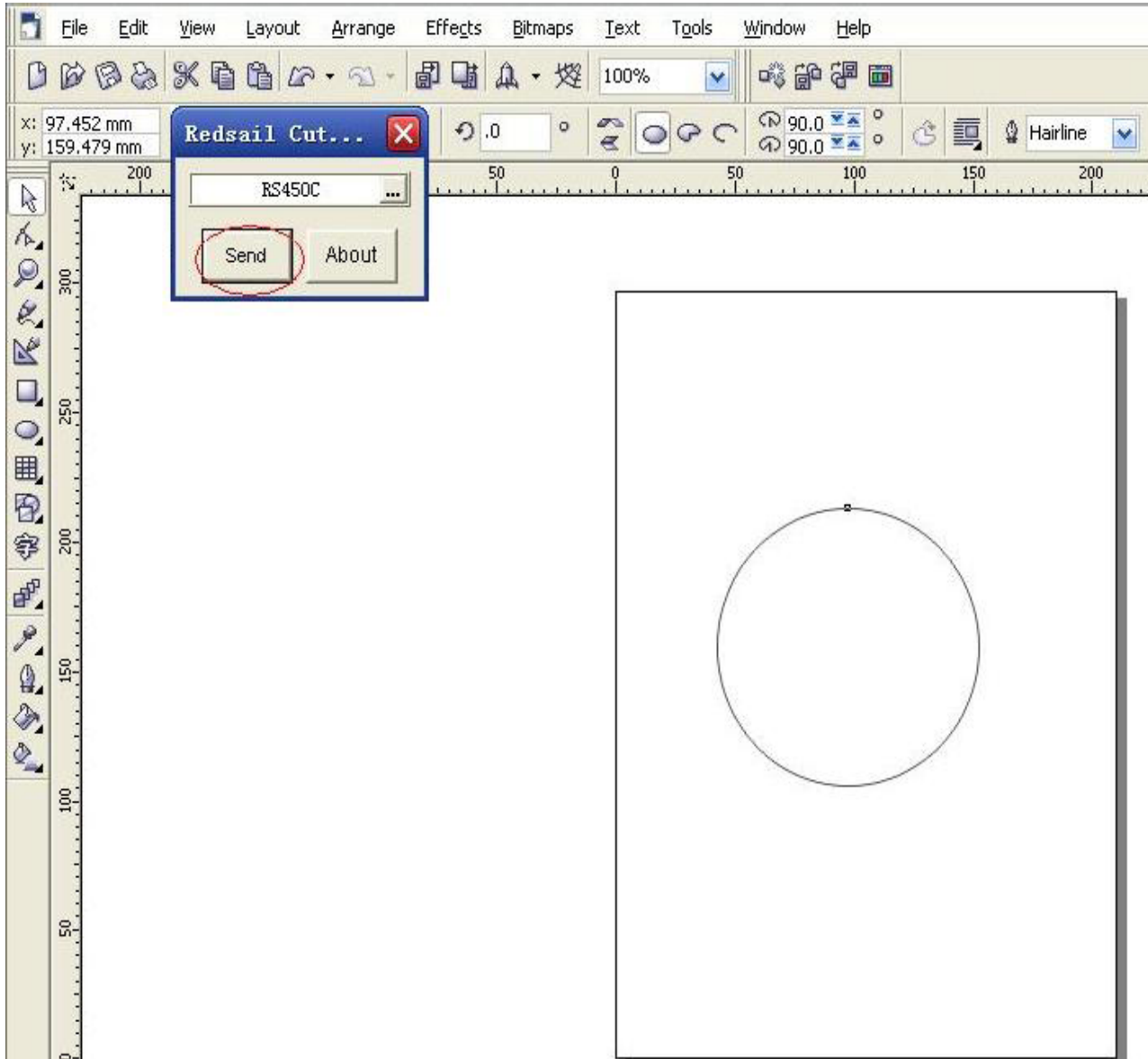
# REDSAIL TECH CO., LTD

Add: B218/F2, Qilu Software Plaza No.1 Shunhua Road, Jinan Hi-tech Zone, Shandong, China ZIP: 250101

Tel: +86-531-86516855/56/57 Fax: +86-531-86516858

Email: [sales@redsailcutters.com](mailto:sales@redsailcutters.com)

Picture 7: Then click "send" on the floating button.



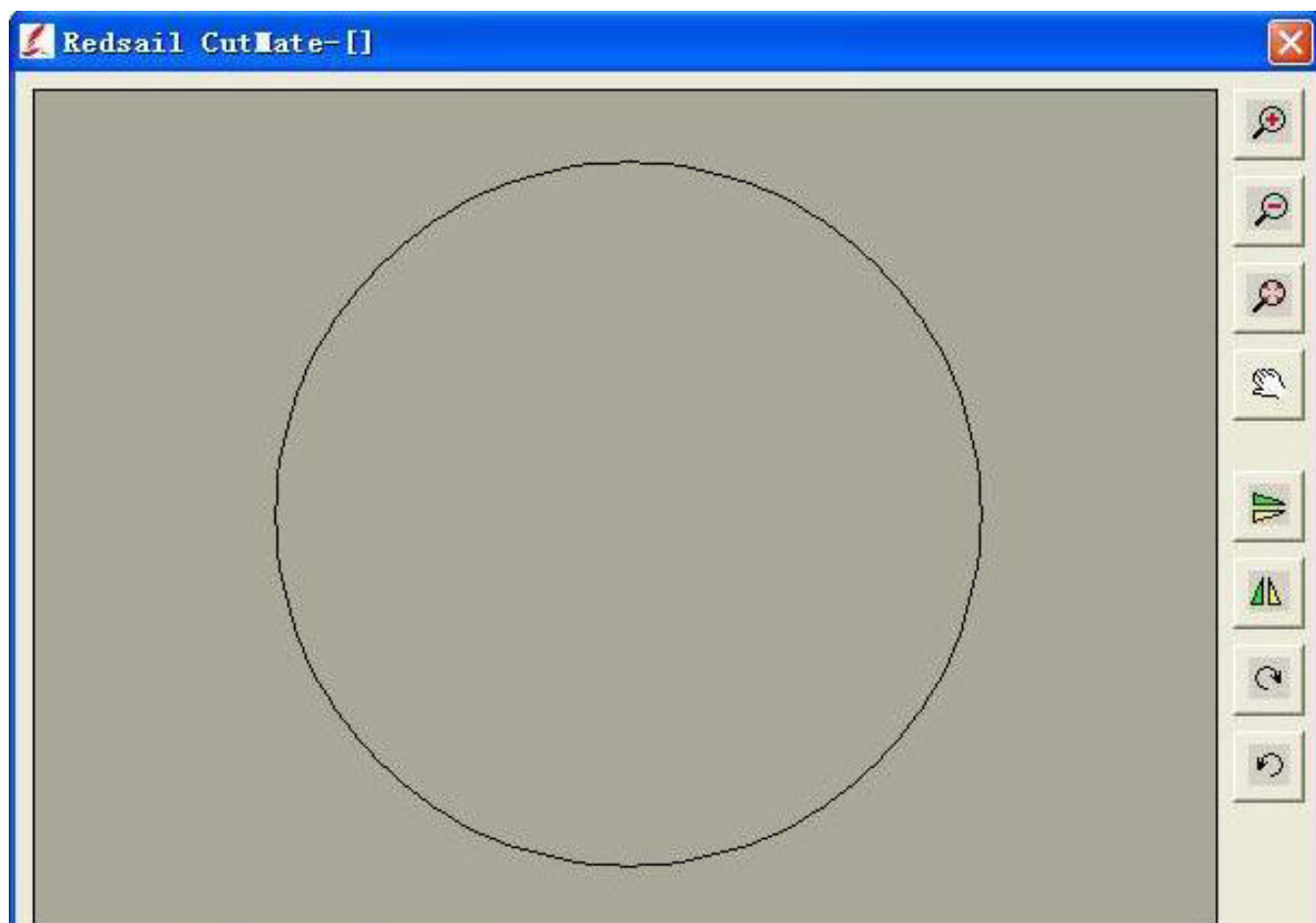
<http://www.redsailcutters.com>



# REDSAIL TECH CO., LTD

Add: B218/F2, Qilu Software Plaza No.1 Shunhua Road, Jinan Hi-tech  
Zone, Shandong, China ZIP: 250101  
Tel: +86-531-86516855/56/57 Fax: +86-531-86516858  
Email: [sales@redsailcutters.com](mailto:sales@redsailcutters.com)

Picture 8: The setting is finished now.



Redsail Tech Co., Ltd  
copyright 2010

<http://www.redsailcutters.com>